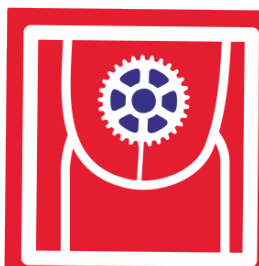


SCIENCE CATALOGUE

November 2023



MOST MODERN & INDISPENSABLE TEACHING LEARNING MATERIAL FOR PHYSICS, CHEMISTRY, BOTANY, ZOOLOGY



EXPLOREET
UNCOVER, DISCOVER & ACHIEVE

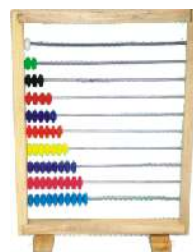
ITEMS FOR MATHEMATICS LABORATORY



Geometry Box



Geometrical Figures



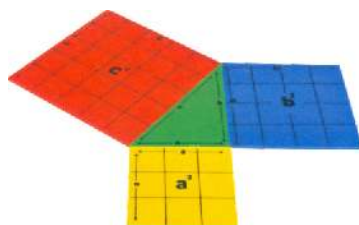
Abacus



Linking Cubes



Photos



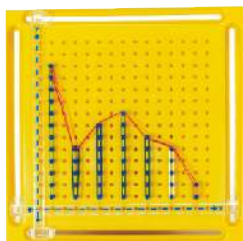
Pythagoras Theorem



Magnetic Fraction Disk



Numeral Balances



Geoboards



Marbles



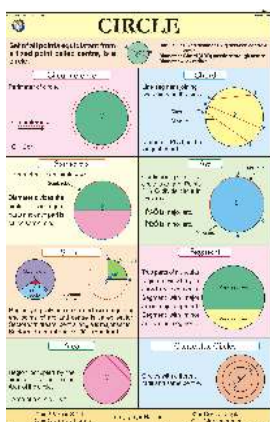
Geometrical Stencils



OHP Transparencies



Set of Cups



Maths Charts



English Teaching Charts



Hindi Teaching Charts



Projectors



Display Boards

For more details, please ask for our MATHS CATALOGUE

CONTENTS

ITEM	Page
SCIENCE SECTION	1-18
Science & Technology Charts	1-7
Botany Charts	1-2
Zoology Charts	2-3
Chemistry Charts	3-5
Physics Charts	5-6
General Charts	7
Genetics And Evolution Charts, AIDS Charts	8
Periodic Table Chart, Lab Display Charts, Lab Safety Charts	9
Food And Nutrition Charts	10
Disaster Management, Environmental Science Charts, Life Sketch of Scientists	11
Biology Models (Models on Botany, Flowers)	12
Zoology Models	13
Models on Human Anatomy	14-15
Photos of Great Personalities (Great Scientists), Lab Safety Photos	16-17
Gems of Psychology, Famous Personalities in Computer Science	18
HEALTH & HYGIENE SECTION	19-23
Health Care Series, Prevent The Diseases	19
Human Physiology Charts Laminated	20
Human Physiology Charts Synthetic	21
First Aid Charts, Some Special Charts on First Aid	22
Yogasan Charts, Map Stands	23
ANATOMICAL MODELS	24-40
Bones, Skeleton, Spine, Skull, Joints, Pelvis & Joint Section Models	24-30
Human Torso Models	30-31
Digestive System	32-33
Heart & Circulatory System	33-34
Eye	34
Respiratory System	35-36
Skin & Ear	36
Reproductive System	37
Excretory System	38
Brain & Nervous System	39
CPR Manikins, Gynae & Obstetric Models	40
Dental Models, Build Your Anatomy Models	41
HISTOLOGY BIOMOLECULES	42-43
Muscle (Smooth, Cardiac, Skeletal) Fibre Models, DNA Model	42
Chloroplast, Mitochondria, Animal Cell	42
Bacterium, Virus (Aids, Rabies, Influenza)	43
SCIENCE KITS	43-46
Rocket Models, Telescope & Binoculars, Microscope Set	43-44
Science Teaching Kits, Community Health Models	44-46
WORKING MODELS	47-52
Physics Working Models	47-50
Fun Science Kit	50
Chemistry Working Models	51
Biology Working Models, Robotics Working Models	52
VISUAL TEACHING AIDS	53
Overhead Projector, Slide Projector, OHP Transparencies, Slides	53
VIDEO CDs	54
Indian School Syllabus on Video CDs (Biology, Physics, Chemistry)	54

Some Tips to Study the Catalogue

Welcome! - You are about to enter the wonderfully exciting world of Teaching Aids. In the following pages of this catalogue you will come to know the products manufactured and marketed by us. Before you start browsing through them we give below some tips that will help you to study it better and effectively.

1. All the articles are manufactured in very heavy quantity by using very costly designs, dies and patterns. As such the size and description cannot be changed or altered at will. Please prepare your requirements according to the material and size mentioned in the catalogue.
2. All the articles are properly coded. Please mention the code and language.
3. The illustrations of charts are very selective. Each and every chart cannot be displayed in the catalogue. As such while placing an order please consult the detailed list mentioned therein.
4. The panorama of the Teaching Learning Material has been very well arranged subjectwise and where ever necessary we have given cross references.
5. It may be stated that the division of the catalogue i.e. Science, Social Studies, Maths is just for the sake of convenience. You may place your requirements with us all in one lot.

PLEASE NOTE

1. Customers' full satisfaction is our business policy. We are fully confident of the high standard and quality of our products.
2. To avoid delay in the execution of your order, please be careful as to mention:
 - a. The code, size & language of the map, chart, model or globe required by you.
 - b. Your complete address with pincode and telephone number.
3. The prices mentioned are nett Ex-godown including GST. Packing, Forwarding & Transportation charges extra. Please note that these prices are not M.R.P.
4. We have introduced GST codes in our catalogue- A and B. These are mentioned along with every price. GST code A means that the product is taxable @18% and GST code B means that the product is taxable @12%.
5. Please mention very clearly your exact requirements mentioning either the cost or our catalogue page No. and item code No. This will help us in processing your indents at a faster speed.
6. Images shown in the catalogue are for reference only. It may differ in colour or shade from actual product.
7. Please look for our Hologram to buy genuine products.
8. All disputes subject to Local Courts Jurisdiction only.

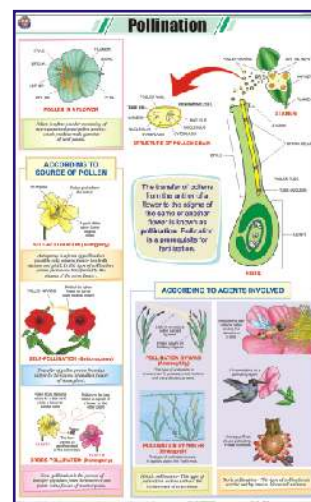
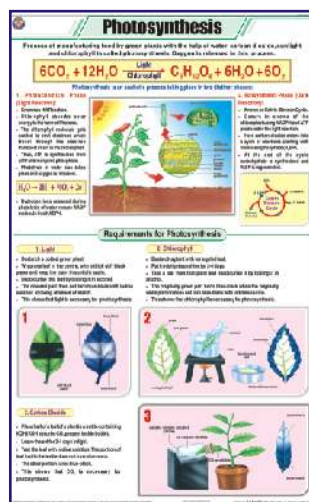
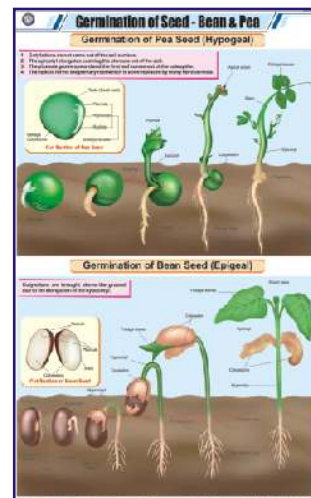
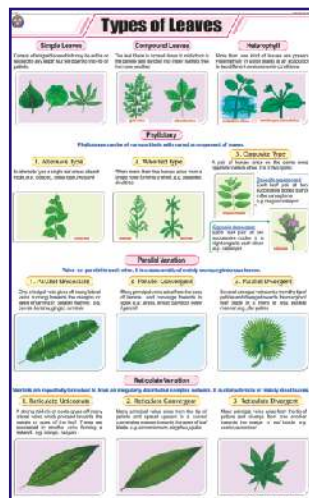
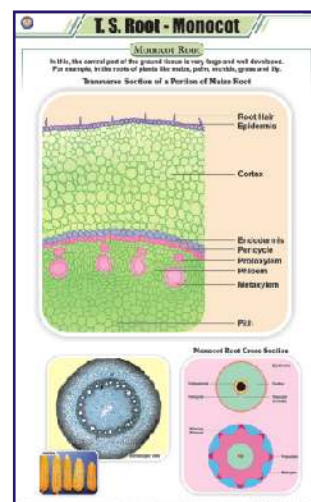
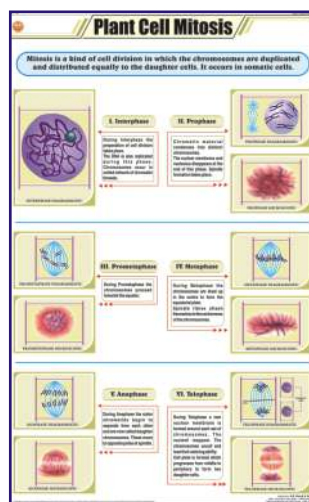
SCIENCE AND TECHNOLOGY CHARTS

Size 58 × 90 cm (In English only)

The charts aim at familiarising students with the subject in a very realistic way and in social context. These delineate the process of life and of the technology that conditions our world today. The students will come to know the intricacies of the phenomenon and how it can be best used for the benefit of mankind. Using the latest printing technology the charts are printed on art paper in full colours and are duly laminated on both sides with thick plastic film and are fitted with plastic rollers.

BOTANY

- STB01 **Plant Kingdom** : Classification of plants, Cryptogamae, Phanerogame.
- STB02 **Typical Plant** : Non-flowering plants, Flowering plants.
- STB03 **Typical Plant Cell** : Structure.
- STB04 **Plant Cell Organelles** : Nucleus, Cell Wall, Cell membrane, Endoplasmic reticulum, Mitochondria, Golgi bodies, Plastids, Chloroplast.
- STB05 **Plant Tissues** : Meristematic, Permanent.
- STB06 **Plant Cell Mitosis** : Cell division in plant somatic cells.
- STB07 **Plant Cell Meiosis** : Reductional cell division in plants.
- STB08 **T.S. Stem - Monocot** : Maize stem.
- STB09 **T.S. Dicot Stem (Sunflower)** : T.S. stem of *Helianthus annuus*.
- STB10 **T.S. Root - Monocot** : Maize root.
- STB11 **T.S. of Dicot Root** : Gram root.
- STB12 **T.S. Leaf - Monocot** : Maize, Boutelova (C4 grass), *Poa annua* (C3 grass).
- STB13 **T.S. Leaf - Dicot** : Mango (mesophytic), Waterlily (hydrophytic), Nerium oleander (xerophytic).
- STB14 **Types of Leaves** : Simple, Compound, Heterophyll, Phyllotaxy, Venation (parallel & reticulate).
- STB15 **Root Systems** : Tap, Fibrous, Adventitious.
- STB16 **Structure of Flower** : Parts, Symmetry & floral diagram Actinomorphic, Zygomorphic, Assymetrical, Position of floral organs.
- STB17 **Calyx and Corolla** : Calyx modifications, Shapes of corolla.
- STB18 **Inflorescences** : Racemose, Cymose.
- STB19 **Fruits & Their classification** : Parts, Classification - simple, Aggregate, Composite.
- STB20 **The Seed : Structure & Germination** : Dicot- exalbuminous & albuminous, Monocot exalbuminous & albuminous, Condition necessary for germination, Epigeal, Hypogeal.
- STB21 **Germination of Seed - Bean & Pea** : Hypogeal germination, Epigeal germination.
- STB22 **Dispersal of Fruits & Seeds** : Dispersal by - air, animals, water, explosion.
- STB23 **Photosynthesis** : Light reaction (Hill reaction), Dark reaction (Calvin Benson cycle), Requirements.
- STB24 **Plant Diseases** : Black rot, Late blight, Bacterial wilt, Smut, Brown spot, TMV, Brown rust, Yellow mosaic, Red rot, Bacterial blight, Powdery mildew, Leaf curl.
- STB25 **Reproduction in Plants** : Vegetative reproduction, Spore formation, Sexual reproduction of flowering plants.
- STB26 **Pollination** : Autogamy, Geitonogamy, Xenogamy, Anemophily, Hydrophily, Biotic (zoophily).
- STB27 **Double Fertilization** : Megasporogenesis, Microsporogenesis.
- STB28 **Artificial Vegetative Propagation** : Tissue culture, Cutting, Layering, Grafting.
- STB29 **Stem Modifications** : Underground modification, Subaerial modification, Aerial modification.
- STB30 **Root Modifications** : Modifications of tap root, Adventitious root and roots for support.
- STB31 **Hydrophytes** : External features & anatomical characters.
- STB32 **Mesophytes** : General description, external features & anatomical characters.



Illustrations are selective. For orders refer the list above.

S-1

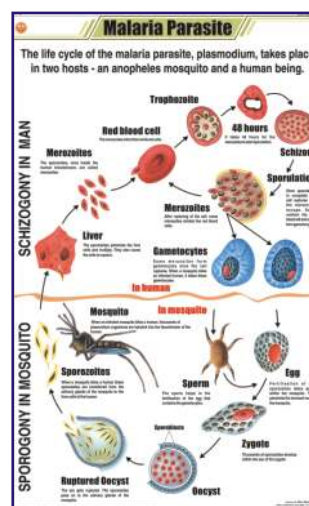
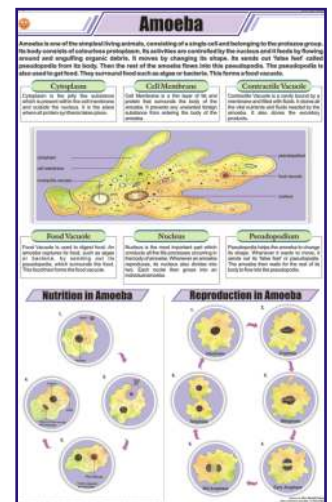
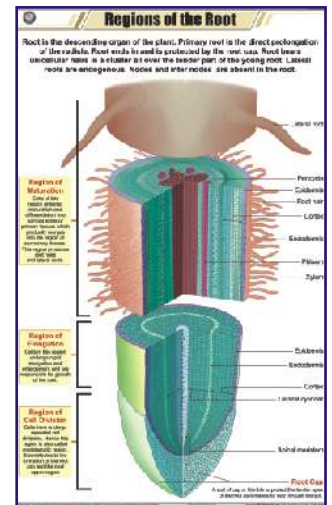
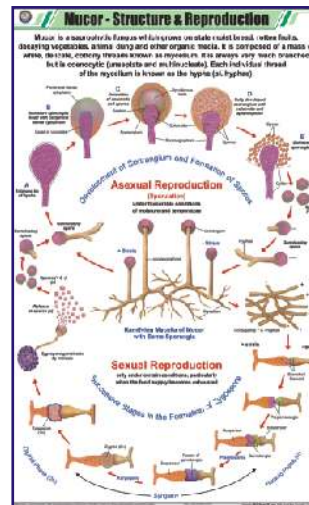
Size 58 × 90 cm (In English only)

BOTANY

- STB33 **Xerophytes (Desert Plants)** : External features & anatomical characters.
- STB34 **Insectivorous Plants** : Sundew (drosera), Venus fly-trap (dionaea), Pitcher plant (nepenthes), Bladderwort (urticularia).
- STB35 **Fungi** : Classification, Symbiotic relationships, Economic importance, Harmful effects, Animal & plant fungal diseases.
- STB36 **Algae** : Classification, Uses, Harms.
- STB37 **Viruses** : Classification, Plant and animal viral diseases.
- STB38 **Bacteria** : Classification, Shape, Respiration, Chemical nature of cell wall, Growth & reproduction, Useful activities, Diseases.
- STB39 **Life Cycle of Fern** : Life cycle of pteridophyte (fern).
- STB40 **Life Cycle of Moss** : Life cycle of bryophyte (moss).
- STB41 **Spirogyra** : Structure, Reproduction (vegetative, asexual, sexual-lateral & scalariform conjugation, germination of zygospore).
- STB42 **Life Cycle of Mushroom** : Life cycle of fungi (mushroom).
- STB43 **Leaf Modification** : Tendrils, Spines, Thorns, Bracts, Flashy Leaves, Adhesive disc, Reproductive leaf, Phyllode, Insectivory.
- STB44 **Parasitic Plants** : Holoparasites - rafflesia, Ivy broomrape, cuscuta, Hemiparasites - Indian paintbrush, mistletoe, owl's clover.
- STB45 **Mucor** : Structure & reproduction of common mold.
- STB46 **Regions of Root** : Region of maturation, Elongation and cell division.
- STB47 **Vascular Bundle** : Xylem & Phloem tissues.
- STB48 **Secondary Growth** : Stage of Secondary growth, Annual (growth) rings.

ZOOLOGY

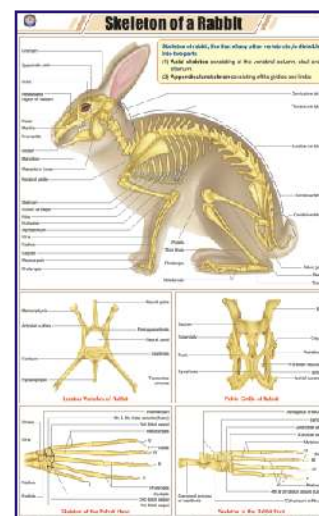
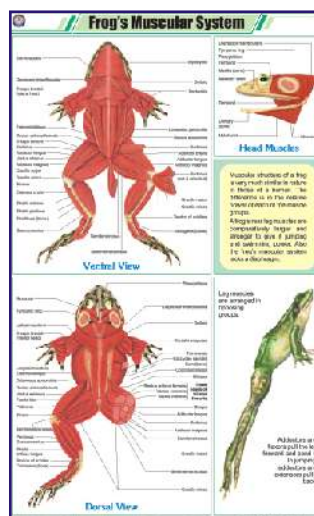
- STZ01 **Animal Kingdom** : Classification in several phylum, Classification of sub-phylum vertebrata into different classes.
- STZ02 **Animal Cell** : Structure.
- STZ03 **Animal Cell Organelles** : Nucleus, Nuclear membrane, Cell membrane, Golgi bodies, Centriole, Ribosomes, Endoplasmic reticulum, Cilium, Flagellum, Mitochondria, Lysosome, Peroxisome.
- STZ04 **Animal Tissues** : Epithelial, Connective, Muscular, Nervous.
- STZ05 **Animal Cell Mitosis** : Cell division in animal somatic cells.
- STZ06 **Animal Cell Meiosis** : Reductional cell division.
- STZ07 **Gametogenesis in Animals** : Oogenesis, Spermatogenesis.
- STZ08 **Fertilization in Animals** : Structure of sperm & ovum, Fertilization process.
- STZ09 **Protozoa** : Classification into 4 classes- Rhizopoda (amoeba), Mastigophora (euglena, giardia), Ciliophora (paramecium), Sporozoa (plasmodium vivax).
- STZ10 **Amoeba** : Structure, Nutrition and reproduction.
- STZ11 **Malaria Parasite** : Life cycle of malaria parasite - plasmodium vivax.
- STZ12 **Paramecium** : Structure, Nutrition, Locomotion and reproduction.
- STZ13 **Hydra** : Structure, LS of body wall, Nematocyst, Reproduction & developmental stages.
- STZ14 **Liver Fluke** : Structure and life cycle of opisthorchis sinensis.
- STZ15 **Tapeworm** : Morphology, Anatomy and general characteristics of Taenia Solium.
- STZ16 **Roundworm (Ascaris)** : Structure, Systems.
- STZ17 **Hookworm** : Structure, Life cycle.
- STZ18 **Life History of Mosquito** : Stages of life cycle of mosquito.
- STZ19 **Life Cycle of Butterfly** : Metamorphosis of a monarch butterfly
- STZ20 **Life History of Housefly**
- STZ21 **Life History of frog**
- STZ22 **Human Blood** : Functions, Components, RBC structure, Blood group, Blood clotting.
- STZ23 **Body's Defense** : Types of Leucocytes, Vaccination, Structure of antibody, Acquired Immunity.
- STZ24 **Harmful Insects**
- STZ25 **Beneficial Insects**
- STZ26 **Food Habits of Birds**



Size 58 × 90 cm (In English only)

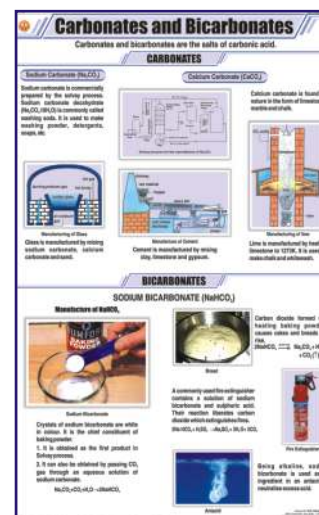
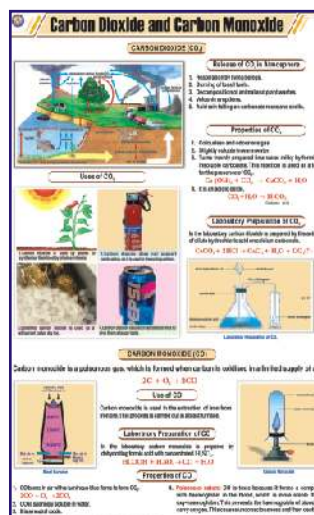
ZOOLOGY

- STZ27 **Fish Anatomy** : Bony fish-general anatomy & skeletal system, Cartilaginous fish-general anatomy, Gill structure.
- STZ28 **Birth of a Bird's Chick** : Development of chick from egg.
- STZ29 **Earthworm I** : Ext. Morphology & Reproduction.
- STZ30 **Earthworm II** : Blood Circulation, Respiratory & Nervous system.
- STZ31 **Earthworm III** : Digestion, Skin & Excretion.
- STZ32 **Cockroach I** : Morphology & Reproduction.
- STZ33 **Cockroach II** : Blood Circulation, Respiratory & Nervous system.
- STZ34 **Cockroach III** : Digestion, Excretory, Skin & Muscles.
- STZ35 **Vertebrate Classes**
- STZ36 **Sense Organs** : Eye, Ear, Tongue, Skin, Nose.
- STZ37 **General Dissection of Rabbit** : Dissection of a mammal
- STZ38 **Neuron** : Structure, Synapse, Bipolar N., Unipolar N., Multipolar N.
- STZ39 **Early Development of the Frog** : 2/4/8 cell stage, blastula, gastrula, embryo.
- STZ40 **Frog's Morphology & Internal Structure**
- STZ41 **Frog's Urogenital System** : Male & Female urogenital system.
- STZ42 **Frog's Circulatory System** : Frog's heart (Bullfrog).
- STZ43 **Frog's Nervous System** : Central/Peripheral/Autonomic nervous system, Brain of frog.
- STZ44 **Frog's Muscular System**
- STZ45 **Life Cycle of Cockroach** : Stages from Ootheca to hatching to nymph to adult.
- STZ46 **Skeleton of a Bird** : Skeleton of pigeon, Anatomy of flying, Pneumatic bone of bird.
- STZ47 **Skeleton of Rabbit** : Axial & appendicular skeleton of rabbit.



CHEMISTRY

- STC01 **Atom And Atomic Structure** : JJ Thompson discharge tube experiment, Rutherford's gold leaf experiment, Chadwick, Goldstein, Rutherford & Bohr's contribution.
- STC02 **Chemical Reactivity of an Element** : Reactivity series of metals.
- STC03 **Chemical Reaction & its Characteristics**
- STC04 **Classification of Chemical Reactions** : Combination reaction, Decomposition reaction, Displacement reaction, Double displacement reaction, Redox reaction, Exothermic - endothermic reaction, Photochemical reaction.
- STC05 **Valencies of Elements** : Name, symbol & valencies of natural occurring elements.
- STC06 **Chemical Bonding** : Covalent bonding (polar & non-polar), Ionic bonding, Metallic bonding, Hydrogen bonding.
- STC07 **Combustion** : Types of combustion - rapid, slow, explosion, complete, incomplete, ignition temperature.
- STC08 **Separation of Substances** : Distillation, Fractional distillation, Loading, Filtration, Churning, Evaporation & crystallisation, Magnetic separation, Sedimentation & decantation, Centrifugation, Sieving, Winnowing, Sublimation, Separating funnel.
- STC09 **Atmosphere and Composition of Air** : Layers of atmosphere, Composition of air.
- STC10 **Occurrence and Forms of Carbon**
- STC11 **Carbon dioxide and Carbon Monoxide**
- STC12 **Carbonates and Bicarbonates** : Sodium carbonate, Calcium carbonate, Sodium bicarbonate.
- STC13 **Sulphur** : Extraction, Structure, Types, Effects of heat, Vulcanisation.
- STC14 **Mole Concept** : Avagadro number, Avogadro's hypothesis.
- STC15 **Composition of Water by Weight** : Berzelius, Dulong & Dumas method, Morley's method, Proust's law.



Illustrations are selective. For orders refer the list above.

S-3

CHEMISTRY

- STC16 **Different Kinds of Cells** : Galvanic cell, Dry cell, Car battery, Rechargeable cell, Sodium sulphur battery, Solar cell, Fuel cell, Mercury zinc button cell.
- STC17 **Electroplating & Corrosion** : Silver/Gold electroplating, Mechanism of rusting.
- STC18 **Cement and Concrete** : Portland cement, Structure of concrete, Types of reinforced concrete foundations, Applications.
- STC19 **Manufacture of Glass** : Soda lime silica glass, glass moulding.
- STC20 **Alkanes** : General formula, Nomenclature, Applications, Methane molecule.
- STC21 **Alkenes** : General formula, Functional group, Structure and IUPAC names, Preparation, Applications.
- STC22 **Alkynes** : General formula, Functional group, Nomenclature, Structure & IUPAC names, Preparation, Applications.
- STC23 **Alcohols** : General formula, Functional group, Nomenclature, IUPAC names & structure, Preparation, Uses of ethanol.
- STC24 **Esters** : General formula, Nomenclature, Common esters, Preparation, Application.
- STC25 **Organic Acids** : Functional group, Common organic acids, Applications.
- STC26 **Soaps and Detergents** : Structure, Cleansing action, Problem with hard water.
- STC27 **Plastics** : Thermoplastics - PVC & polythene, Thermosetting - bakelite & melamine.
- STC28 **Synthetic Fibres** : Rayon, Polyester, Nylon, Acrylic.
- STC29 **Extraction of Iron (Blast Furnace)** : Reduction of iron ore in furnace, Manufacture of steel-basic oxygen process & electric arc process.
- STC30 **Aluminium Metallurgy** : Bayer's process, Hall-Heroult process.
- STC31 **Copper Metallurgy** : Important ores, Extraction process, Electrolysis, Uses.
- STC32 **Extraction of Zinc** : Roasting, Pyrometallurgical Process.
- STC33 **Prep. of Sodium Hydroxide & Sodium Carbonate** : Castner cell, Solvay process.
- STC34 **Prep. of Nitrogen and Nitric acid** : Laboratory prep. of nitrogen & nitric acid, Cryogenic distillation, Ostwald's process.
- STC35 **Prep. of Chlorine and Hydrochloric acid**
- STC36 **Prep. of Sulphur Dioxide & Sulphuric acid** : Contact process.
- STC37 **Prep. of Ammonia and Haber Process**
- STC38 **Prep. of Oxygen and Liquefaction of Air** : Manufacture of O_2 by heating, electrolysis of water, liquefaction of air.
- STC39 **Prep. of H_2 & CO_2** : Lab preparation of hydrogen and carbon dioxide, Steam re-forming of natural gas.
- STC40 **Manufacture of Bleaching Powder** : Hasenclever plant, Bachmann's plant.
- STC41 **Manufacture of Phosphorus** : Manufacture of white phosphorus and red phosphorus.
- STC42 **Crystal Lattices** : Various crystal system, their unit cells, variations & examples.
- STC43 **Close Packed Structures** : Close packing in 2D & 3D, voids.
- STC44 **Sodium Chloride Crystal** : Formation of NaCl crystal, Crystal fracture, FCC arrangement, Dissociation.
- STC45 **Acids, Bases and Salts** : Properties & characteristics of acids, bases and salts.
- STC46 **Electrolysis** : Electrolysis of molten NaCl, Faraday's laws of electrolysis, Refining, Electroplating.
- STC47 **Atoms and Molecules** : Atomic No, Mass No, Isotopes, Isobars, Isotones, Molecules, Chemical formula.
- STC48 **Solids, Liquids & Gases** : Forms of matter, Change of state.

Mole Concept

One mole of any substance contains 6.022×10^{23} particles (atoms, molecules, ions, etc.).

Mass number (A) = Number of protons + Number of neutrons

Atomic number (Z) = Number of protons

Relative atomic mass (A_r) = $\frac{\text{Mass of one atom of an element}}{\text{Mass of one atom of } ^{12}_6\text{C}}$

Relative molecular mass (M_r) = $\frac{\text{Mass of one molecule of a substance}}{\text{Mass of one atom of } ^{12}_6\text{C}}$

One mole of a substance contains 6.022×10^{23} particles.

Mass of one mole of a substance = Molar mass (M)

Number of moles = $\frac{\text{Mass of substance}}{\text{Molar mass}}$

Number of particles = $\text{Number of moles} \times 6.022 \times 10^{23}$

BLAST FURNACE

The blast furnace is a tall, cylindrical structure used for the reduction of iron ore to molten iron. It is a key component in the steel-making process.

Manufacture of Steel:

The blast furnace produces molten iron, which is then used in the steel-making process. The steel-making process involves the addition of carbon and other elements to the molten iron.

Basic Oxygen Process:

In the basic oxygen process, molten iron is blown with oxygen to remove impurities. The resulting molten steel is then cast into various shapes.

Electric Arc Process:

In the electric arc process, scrap iron and steel are melted in an electric arc furnace. The molten steel is then cast into various shapes.

Extraction of Zinc

Zinc is extracted from its ores (mainly zinc blende, ZnS) through a series of steps: Roasting, Leaching, and Electrolysis.

Roasting: $ZnS + O_2 \rightarrow ZnO + SO_2$

Leaching: $ZnO + H_2SO_4 \rightarrow ZnSO_4 + H_2O$

Electrolysis: $ZnSO_4 \rightarrow Zn + H_2SO_4$

The final product is pure zinc metal.

Manufacture of Phosphorus

Phosphorus is extracted from its ores (mainly phosphate rock) through a series of steps: Roasting, Leaching, and Distillation.

Roasting: $Ca_3(PO_4)_2 + SiO_2 + C \rightarrow CaSiO_3 + P_4 + CO$

Leaching: $P_4 + 3H_2O \rightarrow PH_3 + H_3PO_3$

Distillation: $PH_3 + H_3PO_3 \rightarrow P_4 + H_2O$

The final product is white phosphorus.

Sodium Chloride Crystal

Sodium chloride (NaCl) is a common ionic compound. It forms a cubic crystal lattice structure.

Crystal Structure: NaCl has a face-centered cubic (FCC) arrangement of ions.

Properties: High melting point, high boiling point, soluble in water.

Uses: Table salt, industrial feedstock, etc.

Acids, Bases and Salts

Acids: Substances that release H^+ ions in aqueous solution. Examples: HCl , H_2SO_4 , HNO_3 .

Bases: Substances that release OH^- ions in aqueous solution. Examples: $NaOH$, KOH , $Ca(OH)_2$.

Salts: Compounds formed from the reaction of an acid and a base. Examples: $NaCl$, KNO_3 , $CaSO_4$.

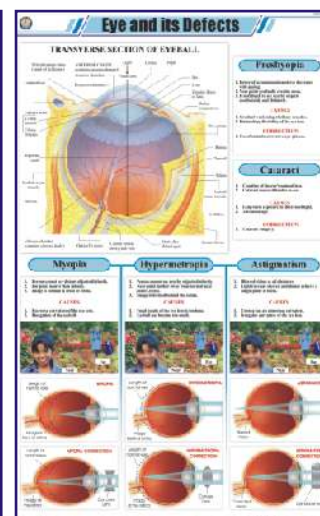
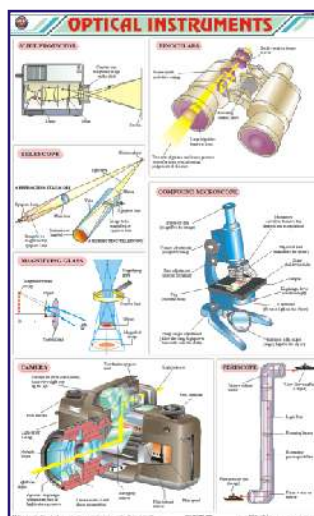
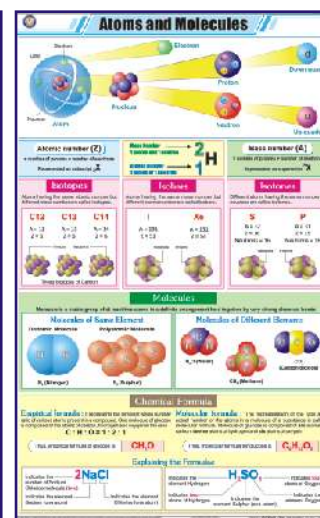
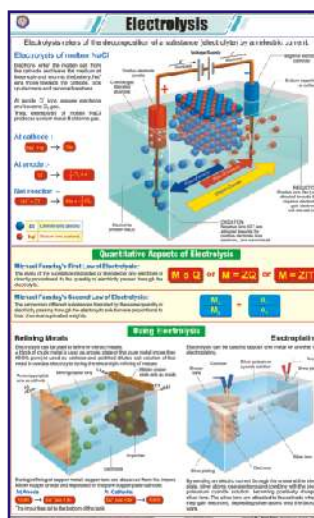
Size 58 × 90 cm (In English only)

CHEMISTRY

- STC49 Shapes of Atomic Orbitals** : Quantum numbers, Shapes of s, p, d & f orbitals.
- STC50 Chemical Equilibrium** : Law of chemical equilibrium, Chemical equilibrium constant, Factors affecting equilibrium. **NEW**
- STC51 Kinetic Theory** : Physical properties of matter at molecular level according to kinetic theory of gases. **NEW**
- STC52 Electronic Configuration** : Atomic no, Mass no, Electronic configuration of first 20 elements. **NEW**

PHYSICS

- STP01 Motion** : Linear motion - rectilinear, curvilinear; Rotational motion, Oscillatory motion, Periodic motion.
- STP02 Changes Around Us** : Slow-fast, Reversible - irreversible, Periodic - non-periodic, Desirable - non desirable, Physical - chemical changes.
- STP03 Metric Weights and Measures** : SI units & their multiples & submultiples.
- STP04 Measurements** : Standard systems, measuring methods.
- STP05 Sound** : What is sound?, Decibel scale of different sounds, Characteristics of sound, Sonic boom, Ultrasound & echo.
- STP06 Wave Motion** : Transverse wave, Longitudinal wave, examples.
- STP07 Simple Machine** : Lever, Pulley, Wedge, Inclined plane, Screw, Wheel & Axle.
- STP08 The Lever** : Lever of - first class, second class, third class.
- STP09 Principle of Archimedes**
- STP10 Pascal's Law** : Law & its applications, hydraulic press, braking system.
- STP11 Reflection of Light** : Laws of reflection, Image formation by plane & spherical mirrors.
- STP12 Refraction Through a Glass Slab** : Lateral displacement, Refractive index, Refraction through different mediums, Total internal reflection - looming & mirage.
- STP13 Refraction Through Prisms** : Dispersion, Refraction through equilateral prism, Re-combination of spectrum colours, Rainbow.
- STP14 Refraction of Light Through lenses** : Image formation by concave and convex lenses.
- STP15 Optical Instruments** : Slide projector, Binoculars, Telescope, Compound microscope, Magnifying glass camera, Periscope.
- STP16 Microscope** : Compound and Electron microscope, Ray diagram.
- STP17 Telescope** : Refracting telescope, Ray diagram of refracting & reflecting (cassegrain) telescope.
- STP18 Eye and its Defects** : TS of eyeball, Presbyopia, Cataract, Myopia (near sightedness), Hypermetropia (far sightedness), Astigmatism.
- STP19 Electric Current-Sources-Effects** : Sources - Voltaic cell, Daniel cell, Dry cell. Effects - Heating, Lighting, Chemical, Magnetic.
- STP20 Static Electricity** : Electrostatic induction, Lightning spark, Photocopier.
- STP21 Current Electricity** : Electric current, Conventional current, voltaic cell, Wiring of a plug, Transmission of electricity, Electric circuit inside a torch and a house.
- STP22 Ohm's Law & Electrical Resistance** : Ohm's law, Factors affecting resistance, Resistance of series and parallel combination.
- STP23 Electric Circuit's Components Symbols**
- STP24 Magnetism** : Earth's magnetic field, Magnetic compass, Types of magnets, Theory of magnetism, Van allen radiation belt.
- STP25 Properties of a Magnet, Making a Magnet** : Electromagnet, single/double touch method, solenoid, properties, storage & handing, magnetic induction, repulsion - test for magnetism.
- STP26 Electromagnetism** : Oersted's experiment, Magnetic field of a current carrying conductor maxwell's right hand grip rule, Fleming's left hand rule (motor effect), Applications.

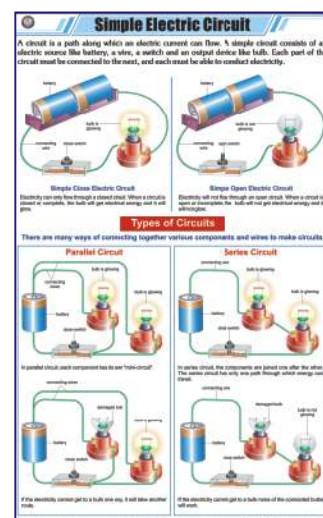
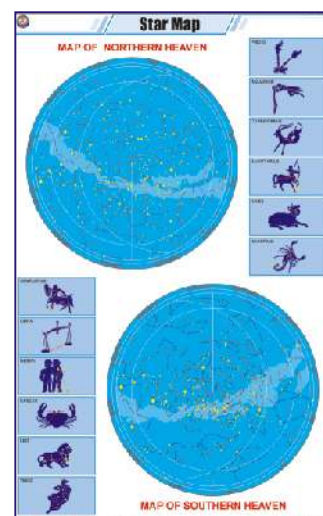
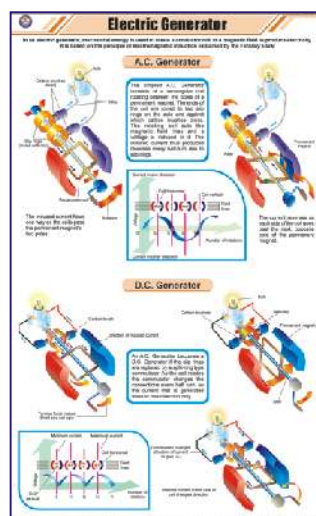
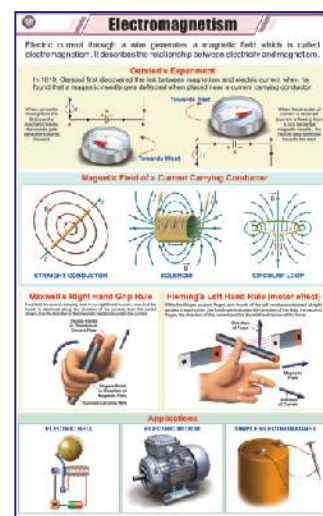
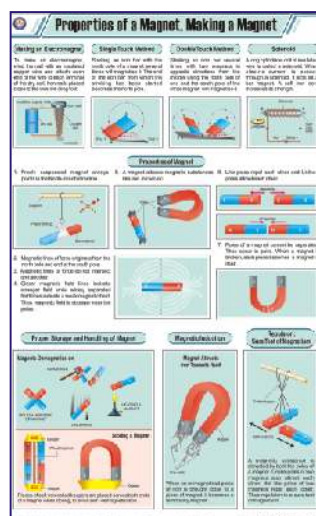


(B) - GST@12% is included in the price.

S-5

PHYSICS

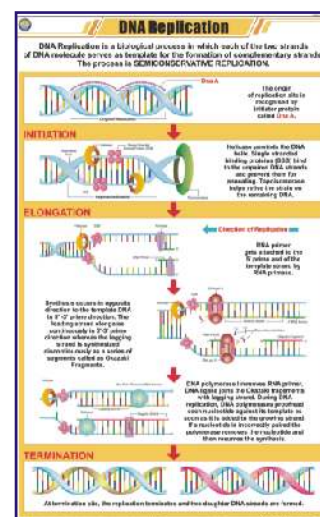
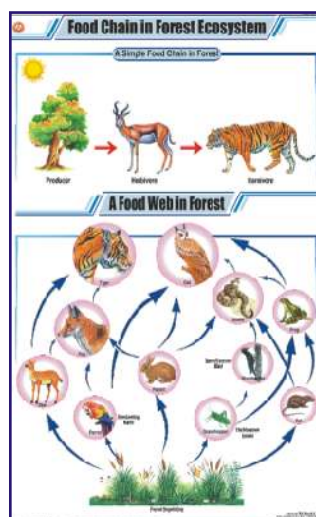
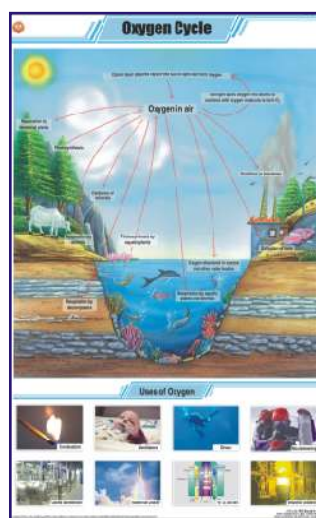
- STP27 **Electromagnetic Induction** : Induction using bar magnet, Self-induction, Mutual induction, Fleming's right hand rule, Applications.
- STP28 **Electric Motor** : simple DC & AC motor, commercial electric motor, applications.
- STP29 **Electric Bell** : Working principle of an electric bell.
- STP30 **Electric Generator** : AC & DC generator.
- STP31 **Dynamo** : Dynamo principle, Bicycle bottle dynamo, Faraday's disc dynamo, Pixii's commutated DC dynamo.
- STP32 **Force** : Effects of force, Combining force.
- STP33 **Friction** : Static, kinetic & rolling friction. Advantages & disadvantages of friction, Methods of increasing or reducing friction.
- STP34 **Gravitation** : Universal law of gravitation, Gravitational constant G, Acceleration due to gravity, Weight, Weightlessness.
- STP35 **Moment and Couple** : Moment (Torque), Principle of moment, Couple & its applications.
- STP36 **Work and Power** : Work & power explained, special causes for work done.
- STP37 **Nuclear Fusion** : Proton-Proton chain, CNO cycle, Controlled fusion, Hydrogen bomb.
- STP38 **Nuclear Fission** : Chain reaction, Spontaneous fission, Controlled fission, Neutron induced fission, Breeding plutonium-239, Enrichment of nuclear fuel.
- STP39 **Nuclear Reactor** : Pressurized water reactor, Fast nuclear reactor.
- STP40 **Radioactivity** : Types of radioactive radiations, Penetrating power, Carbon dating, Decay of uranium-238.
- STP41 **Radio Telescope** : Radio telescope, Astronomical interferometers.
- STP42 **X-Ray** : Characteristics, production and uses of X-rays.
- STP43 **Television** : Picture tube, color triplets, transmission mechanism.
- STP44 **Multistage Rocket** : Stage principle, chemical rocket types, component of rocket system, engine operation.
- STP45 **Wind Mill** : Typical windmill, principle, horizontal & vertical axis wind turbine.
- STP46 **Petrol Engine** : Four stroke petrol engine and its working.
- STP47 **Steam Engine** : Simple steam engine working and principle.
- STP48 **Diode** : Types & symbols.
- STP49 **Universe I (Life Cycle of a Star)**
- STP50 **Universe II (Comets & Meteors)** : Structure of comet, Meteorite strike, Types of meteorites.
- STP51 **Star Map** : Star map of northern and southern heaven, 12 star constellation.
- STP52 **Newton's Laws of Motion** : Newton's first, Second & third law of motion.
- STP53 **Simple Electric Circuit** : Open & close circuit, Parallel circuit, Series circuit.
- STP54 **Measuring instruments** : Screw gauge, vernier caliper, cathode ray oscilloscope, spectrometer, calorimeter, voltmeter, ammeter, galvanometer. **NEW**
- STP55 **Energy** : Types of energies, law of conservation, mechanical energy - Kinetic energy & Potential Energy. **NEW**
- STP56 **Heat and temperature** : SI units, volumetric expansion, specific heat, latent heat, conduction, convection, radiation, temperature & thermal equilibrium, celsius, fahrenheit, kelvin scales. **NEW**
- STP57 **Different Types of Satellite** : Weather, communication, astronomical, remote sensing, earth observation, navigation, miniaturised satellites. **NEW**



Size 58 × 90 cm (In English only)

GENERAL

- STG01 **The Cell Theory** : Prokaryotic, Eukaryotic, Unicellular, Multicellular, Cell theory.
- STG02 **DNA** : Z DNA, B DNA, Double helix structure, Nucleotide.
- STG03 **RNA** : rRNA, mRNA, tRNA, Flow of genetic information, Virus structure.
- STG04 **Levels of Organization**
- STG05 **Origin of Life** : Miller and Urey experiment, Steps in origin of life, Coacervates.
- STG06 **Cellular Respiration (Kreb's Cycle)** : Glycolysis, Krebs TCA cycle, electron transport chain.
- STG07 **Animal Husbandry** : Breeding, Feeding, Weeding, Heeding.
- STG08 **Economic Plants**
- STG09 **Basic Agricultural Practices**
- STG10 **Medicinal Plants - I**
- STG11 **Medicinal Plants - II**
- STG12 **Energy Needs** : Hydro, Chemical, Solar, Wind, Bio, Magnetic, Nuclear, Sound & Light energy.
- STG13 **Fossil Fuels** : Types-solid, liquid, gaseous, calorific value, characteristics coal & petroleum, Fractional distillation.
- STG14 **Petroleum & Natural Gas** : Formation of petroleum, Oil drilling, Fractional distillation.
- STG15 **Renewable Sources of Energy**
- STG16 **Nuclear Energy** : Nuclear energy power plant, Fission, Fusion, Atomic bomb, Hydrogen bomb, Uses, Effects.
- STG17 **Bio-Gas** : Fixed dome type, Floating gas holder type.
- STG18 **Nitrogen Cycle**
- STG19 **Oxygen Cycle**
- STG20 **Carbon Cycle**
- STG21 **Fire & Fire Extinguishers** : Classification of fire, Uses of fire extinguisher, Types of fire extinguishers. Water-CO₂ type, Mechanical foam (AFFF) type, Dry chemical powder (DCP) type, Carbon dioxide type.
- STG22 **Soil - A natural Resource** : Uses, Soil erosion, Soil conservation, Soil pollution.
- STG23 **How Soil is formed and Soil Profile** : Agents of weathering, Layers of soil.
- STG24 **Types of Soils in India**
- STG25 **Food Chain in Forest Ecosystem** : Simple food chain, Food web.
- STG26 **Solar Cooker** : Solar cooker, - Box type, Parabolic type, Panel type.
- STG27 **Water Harvesting**
- STG28 **Purification of Water** : Boiling, Distillation, Filtration, Chlorination, Reverse osmosis, Domestic RO system.
- STG29 **Poultry** : Indegenious breeds, Exotic breeds, Equipments, Behaviour under brooders.
- STG30 **Sericulture (L.H. Silkworm)** : Stages of silk production, Life cycle of bombyx mori.
- STG31 **Apiculture (L.H. Honeybee)** : Queen honey bee, Artificial bee hive, Honey extractor & extraction.
- STG32 **Food Pyramid** : Food pyramid, Components, Balanced diet.
- STG33 **Microorganisms**
- STG34 **Mutation** : Insertion, Duplication, Deletion, Inversion, Translocation, Frame shift, Point mutation.
- STG35 **Enzymes** : Structure, Mechanism, Classification, Enzyme activity.
- STG36 **DNA Replication** : Initiation, Elongation, Termination.
- STG37 **Osmosis** : Molecular view, osmosis in isotonic, hypotonic and hypertonic solutions.
- STG38 **Evidence of the Evolution of Life** : Fossil record, anatomical comparison, comparative embryology.
- STG39 **Food Chain in Pond Ecosystem**
- STG40 **Food Chain in Desert Ecosystem**



These charts are highly illustrative.

S-7



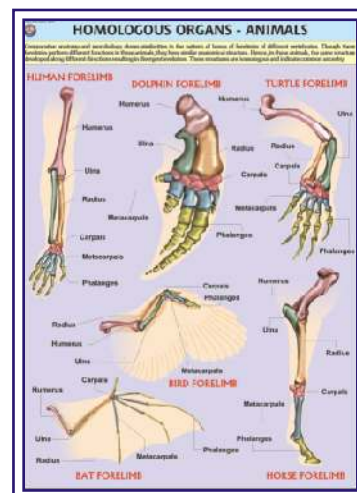
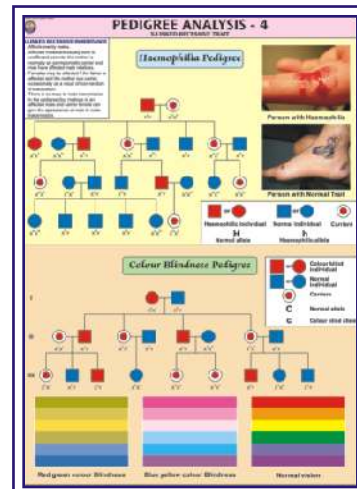
EXPLORE IT
UNCOVER, DISCOVER & ACHIEVE

Contact No : 9890904660 | 7768003827

GENETICS AND EVOLUTION CHARTS

Printed on Polyart Synthetic Paper. Size 70 x 100 cm. Price Rs. 329.00 (B) Each

- GE01S **Pedigree Analysis-1** : showing standard symbols used in Pedigree Analysis and Sample Pedigree.
- GE02S **Pedigree Analysis-2** : showing Autosomal Dominant Trait Pedigree such as Myotonic Dystrophy and Tongue Curler Pedigree.
- GE03S **Pedigree Analysis-3** : showing Autosomal Recessive Trait Pedigree such as Inheritance of Attached Ear Lobe and Inheritance of Sickle Cell Anaemia.
- GE04S **Pedigree Analysis-4** : showing X-linked Recessive Trait Pedigree such as Haemophilia and Colour Blindness Pedigree.
- GE05S **Pedigree Analysis-5** : showing X-linked Dominant Trait Pedigree such as Hypophosphatemia and Droopy Eyelids Pedigree.
- GE06S **Pedigree Analysis-6** : showing Y-linked Trait - Hairy Ear and Mitochondrial Inheritance Pedigree.
- GE07S **Homologous Organs** - Animals: showing Forelimbs of Bat, Turtle, Horse, Human, Bird and Dolphin demonstrating Homology.
- GE08S **Analogous Organs** - Animals: showing Wings of Bird, Butterfly, Pterosaur and Bat demonstrating Analogy.
- GE09S **Homologous Organs** - Plants: showing thorn of Bougainvillea, tendrils of Cucurbita, fleshy cylindrical stem of Euphorbia, fleshy flattened stem of Opuntia, leafy shoots of Chrysanthemum and pineapple representing Plant Homology.
- GE10S **Analogous Organs** - Plants: showing thorn of Pyracantha, spine of Berberis vulgaris, prickles of Prosopis grandulosa and stipular spines of Black Locust representing Plant Analogy.
- GE11S **Hybridisation-1 (Monohybrid Cross)** : Cross between Purple coloured and White coloured flower Pea Plant demonstrating inheritance of one dominant character and expression of recessive parental trait without blending in F₂ generation.
- GE12S **Hybridisation-2 (Dihybrid Cross)** : Cross between Pea Plants differing in two traits (pod colour & plant height) showing segregation of one pair of character is independent of the other pair of characters.
- GE13S **Hybridisation-3 (Incomplete Dominance)** : Cross between true breeding Red and White Snapdragon flower plants showing one character is not completely dominant over other.



CHARTS ON AIDS

Printed on Polyart Synthetic Paper. Size 70 x 100 cm.

- AS01S **HIV** : showing structure and mechanism of infection of Human Immunodeficiency Virus
- AS02S **Transmission of HIV** : explaining different ways which can spread the HIV infection and cause AIDS.
- AS03S **Prevention** : showing various measures which, when adopted, prevent transmission of HIV infection.
- AS04S **How AIDS is not transmitted** : showing various routine tasks which are not involved in transmission of HIV.
- AS05S **Progress of Infection** : showing how HIV infection typically progresses through various stages.
- AS06S **Opportunistic Diseases** : depicting complications which an AIDS patient develops that otherwise wouldn't normally occur in a person with a healthy immune system.
- AS07S **Sexually Transmitted Diseases** : showing various sexually transmitted diseases which increase the chances of acquiring HIV infection by an individual when exposed to the virus.
- HP26S **Human Immune System** : showing different organs involved in a healthy immune mechanism. As AIDS progressively weakens the immune system, chart gives an outline of functions of Immune System to better understand what AIDS can do.

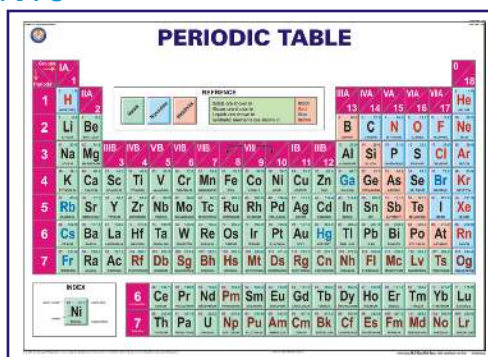


CHEMISTRY LAB DISPLAY CHARTS

PERIODIC CHART OF ELEMENTS



A Most detailed chart printed in multi colours showing Solids, Liquids and Gases in separate distinctive colours together with their Atomic Numbers, Density, Atomic Radius, Melting Point, Electronic Structure, Electro negativity, First Ionization Energy, Oxidation State and Crystal structure.



PT01 Size 140 × 100 cm Laminated
PT02 Size 100 × 70 cm Laminated
PT03S Size 100 × 70 cm Synthetic
PT04 Size 50 × 35 cm Paper
PT05 Size 50 × 35 cm Laminated w/o rollers
PT06 Size 100 × 75 cm Paper folded in Book form
PT07S Size 100 x 70 cm Mendeleev's Periodic Chart Syntheti
PT08 Size 90 × 55 cm Laminated

PT09 Size 96 x 70 cm Periodic Chart
Elementary

FOR 3-D INTERACTIVE PERIODIC TABLE

Please see page S-52



LABORATORY SAFETY

Showing basic safety measures to be followed while working in a chemistry laboratory. Printed on Polyart Synthetic Paper.

Size 70 x 100 cm.

Code CL01S

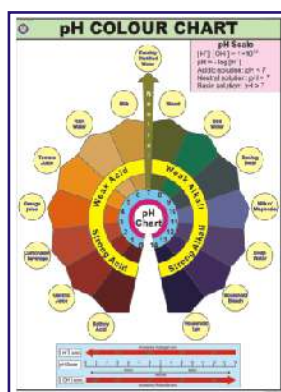


LABORATORY TECHNIQUES

Showing various procedures and techniques generally used in a chemistry laboratory. Printed on Polyart Synthetic Paper.

Size 70 x 100 cm.

Code CL02S



pH COLOUR CHART

Reference colours indicated by universal indicator with different acidic or basic substances to show their approximate ph values. Printed on Polyart Synthetic Paper. Size 70 x 100 cm.

Code CL03S



LABORATORY FIRST AID

Showing various first aid techniques and procedures used during an accident in a Laboratory. Printed on Polyart Synthetic Paper.

Size 70 x 100 cm.

Code CL04S

LAB SAFETY CHARTS

Size 30 × 45 cm, Printed on 300 gsm art paper & lamination on both sides.

LSC01 Protect yourself, Dress appropriately

LSC02 Always wash your hands before and after the experiment

LSC03 Keep the testing area and vessels clean before & after the experiment

LSC04 Never eat or drink while performing experiments

LSC05 Avoid using glassware that is cracked or chipped

LSC06 Keep your face away from reaction vessels

LSC07 Never suck liquid chemicals by mouth, Use a pipette bulb

LSC08 Beware! Hot & cold look a like

LSC09 Never touch or taste chemicals

LSC10 Always experiment under supervision, Inform supervisor in case of accident

LSC11 Act responsibly, Don't fool around in the laboratory

LSC12 Always keep the fire extinguisher & first aid box within reach

LSC_12 complete set of above 12 charts



Laminated with thick plastic film on both sides & fitted with superior plastic rollers.

S-9

CHARTS ON FOOD AND NUTRITION

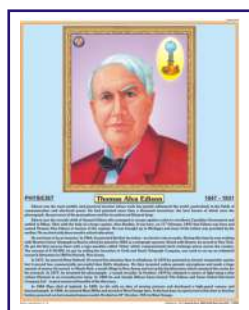
Size 70 x 100 cm. English & Hindi combined. Laminated Each Rs. 269.00 (B)

- FN01 OUR FOOD** : Chart shows various components and functions of food. It also illustrates food pyramid mentioning balance diet and daily requirement of nutrients by different age groups.
- FN02 PROTEINS** : Chart shows both animal and plant sources of protein. It also explains various functions performed by proteins in our body and some special conditions of high protein needs.
- FN03 FATS** : Chart shows a brief classification of fats with a mention of essential fatty acids. It also shows some of the important functions and sources of fats.
- FN04 CARBOHYDRATES** : Chart shows classification of carbohydrates as simple and complex with their various functions in the body. It also shows various foods rich in carbohydrates.
- FN05 VITAMINS** : Good explanatory chart depicting both fat soluble and water soluble vitamins with their various sources and reasons of requirement in the body.
- FN06 MINERALS** : Important minerals like Sodium, Iron, Calcium, Iodine etc. required in our body to live a healthy life are shown in the chart. Chart also shows various functions they perform and their sources.
- FN07 WATER & ROUGHAGE** : Chart shows the importance of water and roughage and some major functions performed by them in the body. Chart also gives a good knowledge about their sources.
- FN08 DEFICIENCY DISEASES** : Chart shows the havoc conditions arised due to deficiency of various nutrients in the body and their symptoms. The understanding of chart will indicate the importance of good balanced diet.
- FN09 OVERNUTRITION DISORDERS** : Chart shows that not only deficiency but also the over consumption of food is not good for health. Various overnutritional disorders with their causes and symptoms are depicted in the chart.
- FN10 Food's Nutritive Value** : Chart shows the nutrient's composition of various common foodstuffs in a tabular form.



LIFE SKETCH OF SCIENTISTS

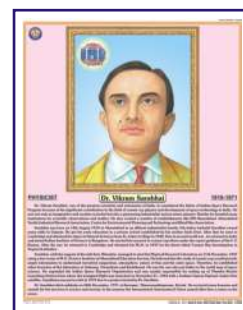
Size 45 x 57 cm Approx. Laminated and fitted with plastic rollers.



LSS01	Albert Einstein	LSS08	H.J. Bhabha	LSS15	Raja Ramanna
LSS02	A.P.J. Kalam	LSS09	J.C. Bose	LSS16	Ramanujan
LSS03	Archimedes	LSS10	Louis Pasteur	LSS17	Rutherford
LSS04	Birbal Sahni	LSS11	Madam Curie	LSS18	S.N. Bose
LSS05	C.V. Raman	LSS12	Meghnad Saha	LSS19	Sarabhai
LSS06	Darwin	LSS13	Mendeleev	LSS20	Thomas Edison
LSS07	Galileo Galillee	LSS14	Newton		

(Available in English as well as in Hindi)

(Above product code is for English. Please add H to the code for Hindi)

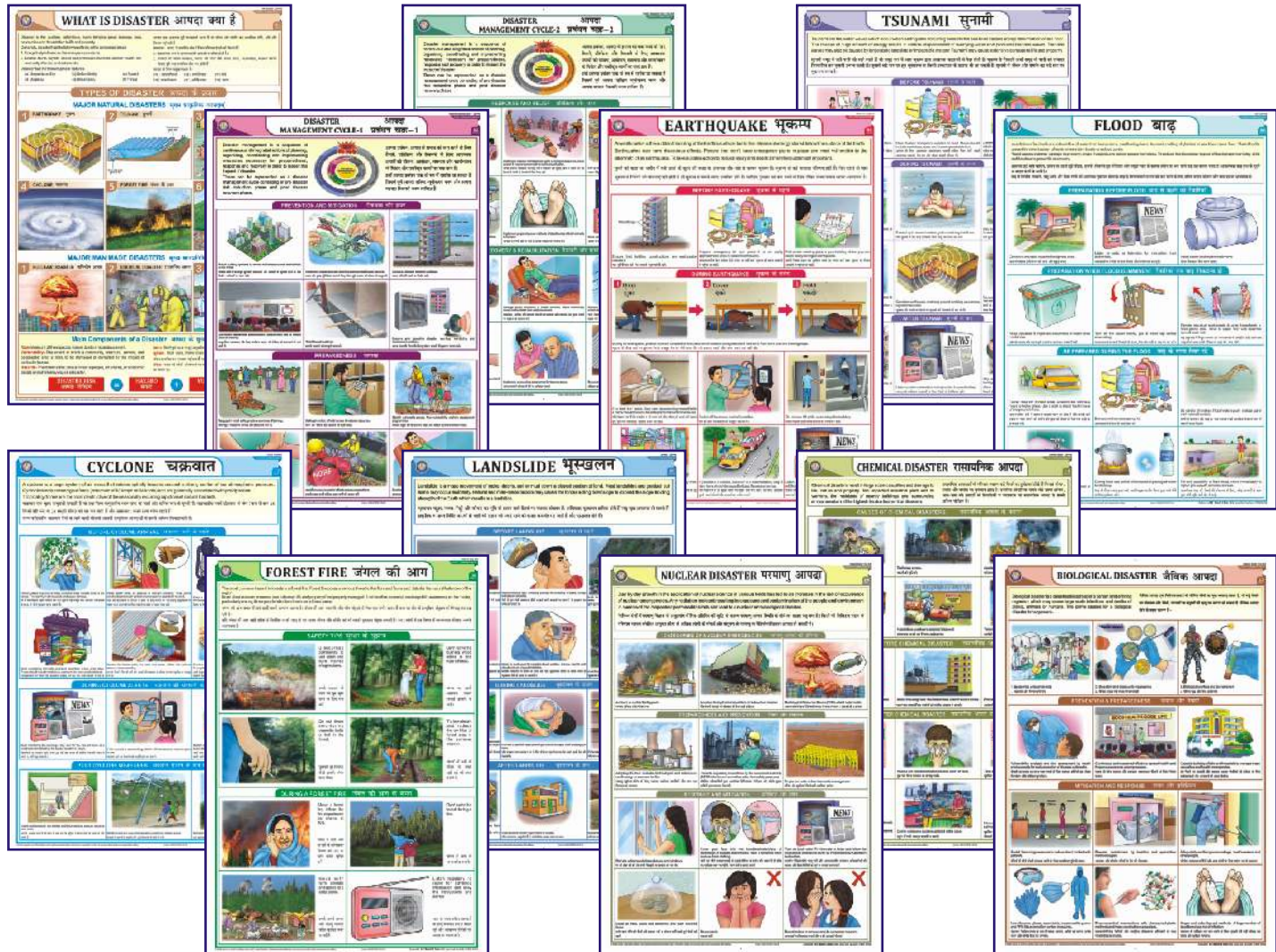


DISASTER MANAGEMENT CHARTS

Size 70 x 100 cm. English & Hindi combined. Laminated

- DMS01 What is a Disaster
DMS02 Disaster Management Cycle-1 **NEW**
DMS03 Disaster Management Cycle-2 **NEW**
DMS04 Earthquake
DMS05 Tsunami
DMS06 Flood

- DMS07 Cyclone
DMS08 Forest Fire
DMS09 Landslide **NEW**
DMS10 Nuclear Disaster **NEW**
DMS11 Chemical Disaster **NEW**
DMS12 Biological Disaster **NEW**



ENVIRONMENTAL SCIENCE

Size 50 x 70 cm. English. Laminated)

- ES01 Garbage Management **NEW**
ES02 Sewage Treatment Plant **NEW**
ES03 Global warming & Greenhouse effect **NEW**



(B) - GST@12% is included in the price.

S-11

BIOLOGY MODELS

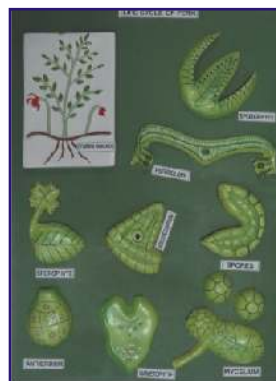
BOTANY MODELS

Made of Fiber Glass on MDF Board. Each Model size 60 x 45 cm

BMB01 Plant Cell
BMB02 Germination of Seed
BMB03 Fertilization & Angiosperms
BMB04 Plant Cell Meiosis
BMB05 Plant Cell Mitosis
BMB06 L. S. Flower
BMB07 L. S. Ovary

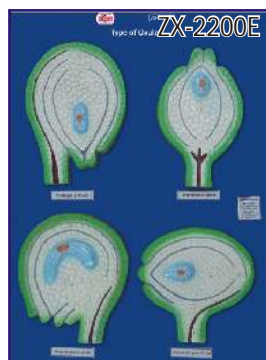
BMB08 T. S. Monocot Root
BMB09 T. S. Dicot Root
BMB10 T. S. Monocot Stem
BMB11 T. S. Dicot Stem
BMB12 T. S. Monocot Leaf
BMB13 T. S. Dicot Leaf
BMB14 Root Tip

BMB15 Life Cycle : Moss
BMB16 Life Cycle : Fern
BMB17 Life Cycle : Fungus
BMB18 Spirogyra
BMB19 Pitcher Plant
BMB20 Funaria Plant



ZX-2200E Types of Ovules

- 4 pieces model on board.
- Model shows anatropous, orthotropous, amphitropous and hemi-anatropous ovules.
- Size : 45x60x3
- 9 parts labeled in total.



ZX-2600E L.H. of Angiosperm

- Model is a set of 19 piece.
- Model is mounted on board to show the life cycle of an angiosperm.
- Size : 60x45x3 cm.
- 13 parts labeled in total.



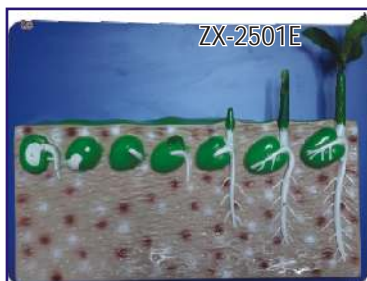
ZX-2500E Monocot Seed Germination

- Stages of germination (Hypogeal) in maize is shown.
- Mounted on wooden base.
- Size: 56 x 41 x 9 cm
- 8 parts labeled in total



ZX-2501E Dicot Seed Germination

- Stages of germination (Hypogeal) in pea is shown.
- Mounted on wooden base.
- Size: 56 x 41 x 9 cm.
- 8 parts labeled in total



MODELS OF FLOWERS



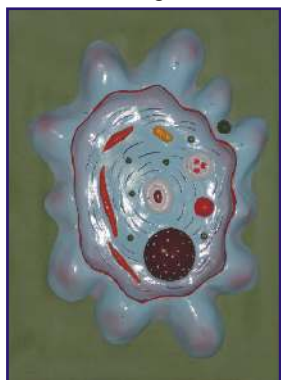
Made of Fiber Glass on stand

BMF01 Typical Flower
BMF02 Liliaceae Flower
BMF03 Rosaceae Flower

ZOOLOGY MODELS

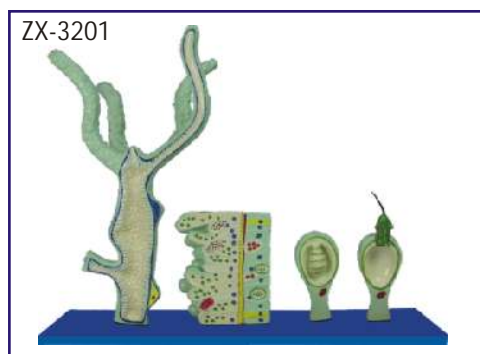
Made of Fiber Glass on MDF Board. Each Model Size 60 x 45 cm

BMZ01	Animal Cell	BMZ08	Malarial Parasite	BMZ15	Development of Frog
BMZ02	Animal Cell Meiosis	BMZ09	Bacteria	BMZ16	Life History of Silk Worm
BMZ03	Animal Cell Mitosis	BMZ10	Virus	BMZ17	Life History of Mosquito
BMZ04	Amoeba	BMZ11	Frog Dissection	BMZ18	Life History of Honey Bee
BMZ05	Paramecium	BMZ12	Rat Dissection	BMZ19	Life History of Butterfly
BMZ06	Hydra	BMZ13	Fish Dissection	BMZ20	Life Cycle of Tapeworm
BMZ07	Euglena	BMZ14	Rabbit Dissection		



ZX-3200E Tape Worm

- Set of 8 pieces model shows scolices of beef tapeworm (Taenia Saginata), pork tapeworm (Taenia Solium), mature egg, larval stage tapeworm and longitudinal sections of gravid, immature and mature proglottid.
- Size: 55x40x6 cm.
- 27 parts labeled in total.



ZX-3201 HYDRA

- 4 piece model mounted on board.
- Significant anatomical features shown include ectoderm, mesoglea, coelenteron, male testis and female egg cells, buds, hypostome, nematoblast cells, cnidoblast etc.
- 28 parts are labeled in total.

ZX-3208E Bony Fish General Anatomy

- Replica model on stand of a bony fish (perch)
- Model is longitudinally dissected in 5 parts.
- Details of external features are shown on one side & internal anatomy is shown on other side.
- Removable parts are magnetically secured in position. 42 parts labeled in total.
- Life size.



A vivid display will go deep down in memory.

S-13

SPECIAL MODELS ON HUMAN ANATOMY

HA101A HUMAN BODY TORSO - Torso with head with detachable internal structure of Head and neck, Organs of Thorax and abdomen cavities of the viscera can be emptied, for study of blood vessels. Dissectable in 12 parts made of Fibre Glass painted in natural colours. Made of Fiber Glass. Magnetic. Life Size

HA101 HUMAN BODY - Torso with head with detachable internal structure of Head and neck, Organs of Thorax and abdomen cavities of the viscera can be emptied, for study of blood vessels. Dissectable in 12 parts made of Fibre Glass painted in natural colours. Made of Fiber Glass. Life Size Non magnetic.

HA102 Human Body - Torso Small size

HA103 HUMAN SKELETON - Life size made of fibre glass. All the bones shoulder & hip joints clearly depictable

HA103S Stand for above

HA104 HUMAN SKELETON - Plastic size 70 cm with stand.

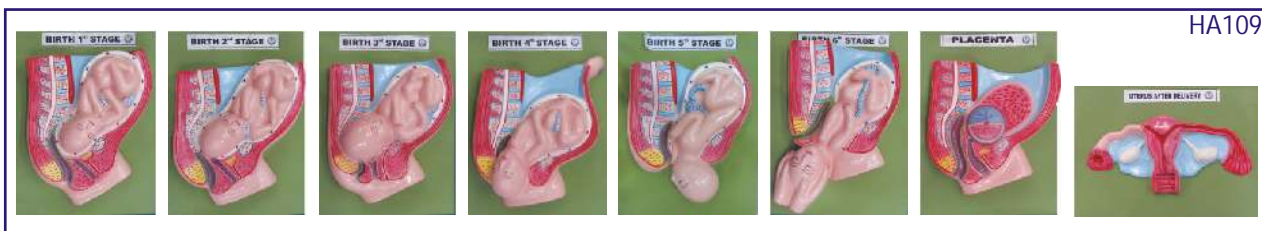
HA105 HUMAN SKELETON - Plastic size 40 cm with stand.

HA106 Dummy with Doll made of Fibre Glass

HA106A Dummy Baby for Dummy with Doll

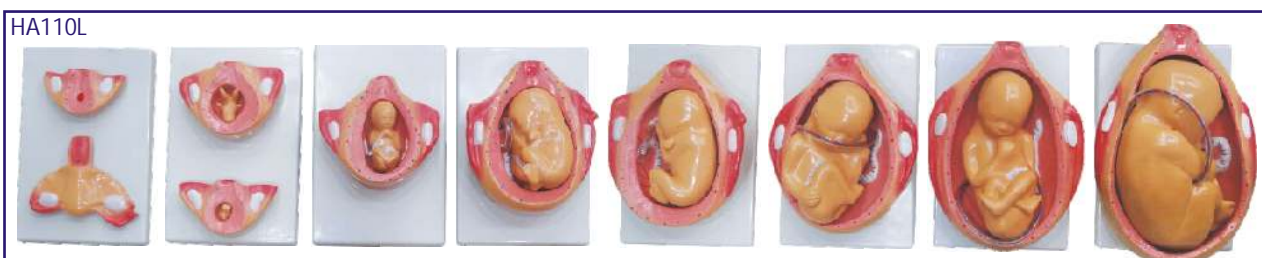
HA107 Female Pelvis with child

HA108 Female Pelvis with reproductive organs



HA109 Delivery Process Models set of 8

HA110 Development of Fetus/Embryo set of 9



HA110L Development of Fetus/Embryo set of 9 Large size (A)

HA111F Full Size Human Female Body Fibre Glass

Showing organs & muscles

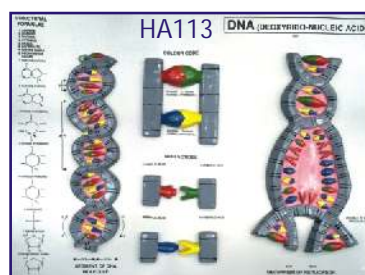
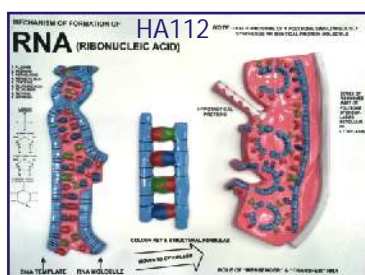
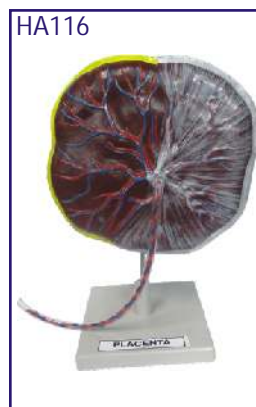
HA111M Full Size Human Male Body Fibre Glass

Showing organs & muscles

HA112 RNA 60x 45 cm

HA113 DNA 60x 45 cm

HA116 Human Placenta Model made of Fiber Glass



SPECIAL MODELS ON HUMAN ANATOMY

Dissectable Models (Fibre Glass)

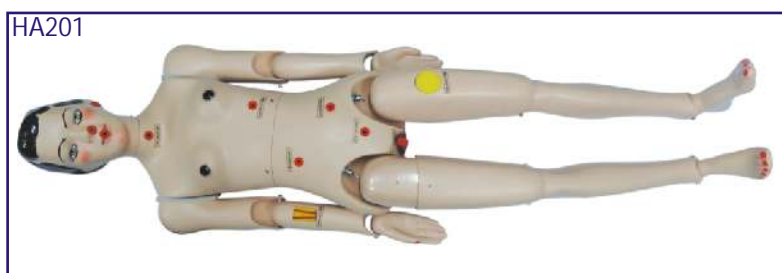
- HA126 Eye Ball
- HA127 Human Heart
- HA128 Human Ear
- HA129 Human Brain
- HA130 Human Kidney
- HA131 Human Lungs



Fibre Glass Models (Wooden Base) size 81 × 31 cm

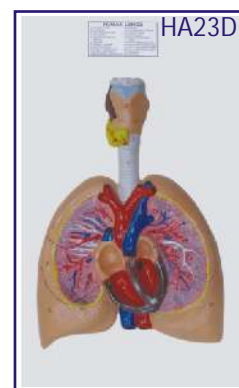
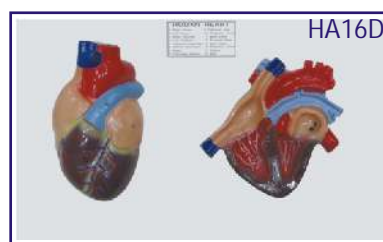
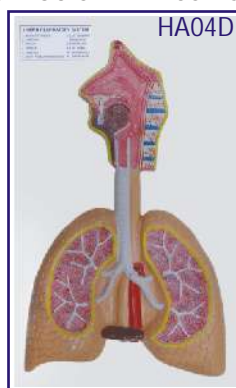
HA201 Nursing Manikin Female Made of Fibre Glass Life Size

HA202 Nursing Manikin Male Made of Fibre Glass Life Size



HUMAN ANATOMY 3-D MODELS

Deluxe Quality, Made of Fiber Glass, Mounted on Wooden Board
Size 30 × 50 cm Price Rs. 1439.00 (A) each



- HA01D Teeth
- HA02D Circulatory System
- HA03D Digestive System
- HA04D Respiratory System
- HA05D Nervous System
- HA06D Skeleton
- HA07D Head & Neck
- HA08D Skin
- HA09D Mouth
- HA10D Tongue

- HA11D Spinal Cord
- HA12D Stomach
- HA13D Liver
- HA14D Kidney
- HA15D Brain
- HA16D Heart
- HA17D Eye
- HA18D Ear
- HA19D Male Pelvis
- HA20D Female Pelvis

- HA21D Reproductive Organs (Female)
- HA22D Reproductive Organs (Male)
- HA23D Lungs with Heart & Larynx
- HA24D Skull
- HA25D Excretory System
- HA26D Endocrine System Male
- HA27D Endocrine System Female
- HA28D Muscular System Front View
- HA29D Muscular System Back View
- HA30D Nose

The models are manufactured under expert supervision.

S-15

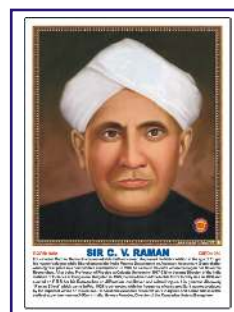
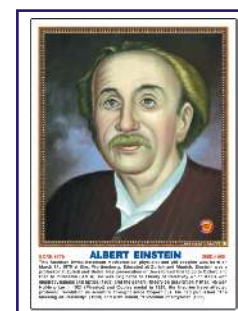
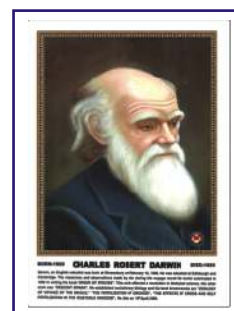
PHOTOS OF GREAT PERSONALITIES

MATT CANVAS LAMINATED ON NUWOOD BOARD

GREAT SCIENTISTS

Size 31 × 43 cm Approx (GS01P - GS140P) Size 45 × 60 cm
Approx (GS01PS - GS140PS)

GS01	Charles Robert Darwin (B)	GS51	A. P. J. Abdul Kalam (P)
GS02	Gregor Mendel (B)	GS52	Dr. Vikram Sarabhai (P)
GS03	Lamarck (B)	GS53	Aryabhata (P, A & M)
GS04	Louis Pasteur (B)	GS54	Dr. S. S. Joshi (C)
GS05	Dr. William Harvey (B)	GS55	Sir Alexander Fleming (B)
GS06	Leonardo-da-Vinci (B)	GS56	D. Mata Parshad (C)
GS07	Sir Joseph Lister (B)	GS57	Benjamin Franklin (P)
GS08	Anton Van Leeuwenhoek (B)	GS58	Ernest Rutherford (P & C)
GS09	Carl Von Linnaeus (B)	GS59	Dr. Raj Ramanna (P)
GS10	Edward Jenner (B)	GS60	Nicholas Copernicus (A & P)
GS11	Sir James Young Simpson (B)	GS61	Alessandro Volta (P)
GS12	Thomas Henry Huxley (B)	GS62	Alfred Nobel (C)
GS13	Sir Edwin Ray Lankester (B)	GS63	Anton Henry Bekuerel (P)
GS14	Sir Ronald Ross (B)	GS64	Atovan Gerok (P)
GS15	Hugo De-vries (B)	GS65	Benjamin Thomson (P)
GS16	Sir Charles Bell (B)	GS66	Crick (B)
GS17	Alfred Russel Wallace (B)	GS67	Watson (B)
GS18	Sir J. C. Bose (B)	GS68	Edward Victor Aplanon (P)
GS19	Dr. Birbal Sahni (B)	GS69	James Clark Maxwell (P)
GS20	Sunder Lal Hora (B)	GS70	Jesse Lious Gelusale (P & C)
GS21	Galileo Galilee (P)	GS71	Johns Kepler (A & P)
GS22	Sir Isaac Newton (P)	GS72	Kalpna Chawla (A & P)
GS23	Sir C. V. Raman (P)	GS73	Max Planck (P)
GS24	Dr. H. J. Bhabha (P)	GS74	Panchanan Maheshwari (B)
GS25	Archimedes (P)	GS75	Varah Mihir (A, P & M)
GS26	Albert Einstein (P)	GS76	Sunita Williams (P)
GS27	Thomas Alva Edison (P)	GS77	James Watt (P)
GS28	Robert Boyle (P & C)	GS78	Andre Marie Ampere (P & M)
GS29	Marie Curie (P & C)	GS79	A. Graham Bell (P)
GS30	Michael Faraday (C)	GS80	Edwin Powell Hubble (A & P)
GS31	John Dalton (C)	GS81	Rakesh Sharma (A)
GS32	Dr. P. C. Ray (C)	GS82	M. S. Swaminathan (B)
GS33	Dr. H. G. Khorana (B & C)	GS83	Robert Hooke (P, B & A)
GS34	Dr. S. S. Bhatnagar (C)	GS84	S. R. Ranganathan (M & Lib.)
GS35	S. Ramanujan (P & M)	GS85	J. B. S. Haldane (B)
GS36	Antoine Laurent Lavoisier (C)	GS86	Guglielmo Marconi (P)
GS37	William Ramsay (C)	GS87	Wilbur Wright (P)
GS38	Humphry Davy (C)	GS88	Orville Wright (P)
GS39	August Weismann (B)	GS89	Neil Armstrong (P & A)
GS40	Joseph Priestley (C)	GS90	Wihelm Roentgen (P)
GS41	Aristotle (B)	GS91	S. Chandrasekhar (P & A)
GS42	Dmitri I. Mendeleef (C)	GS92	Lord Kelvin (P & M)
GS43	Burbank Luther (B)	GS93	Charles Babbage (P & M)
GS44	S. N. Bose (P)	GS94	Friedrich Wohler (C)
GS45	M. N. Saha (P)	GS95	Frederick William Herschel (A)
GS46	K. S. Krishnan (P)	GS96	J. J. Berzelius (C)
GS47	K. N. Bahl (B)	GS97	James Chadwich (P)
GS48	J. J. Thomson (P)	GS98	Dr. Vijay P. Bhatkar (P)
GS49	Neils Bohr (P)	GS99	C. N. R. Rao (C)
GS50	Gilbert Newton Lewis (C)	GS100	George Boole (M)



Photos size 31 × 43 cm

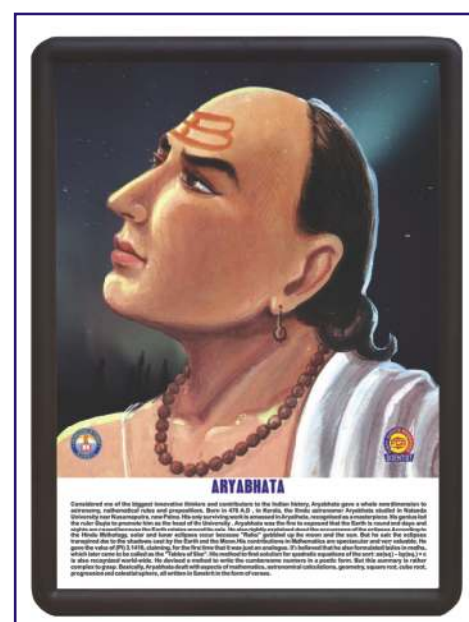


Photo size 45 × 60 cm

(A) Astronomer, (B) Biologist, (C) Chemist, (M) Mathematician, (P) Physicist

GREAT SCIENTISTS

Size 31 × 43 cm Approx (GS01P - GS140P) Size 45 × 60 cm
Approx (GS01PS - GS140PS)

GS101 Albert Abraham Michelson (P)	GS121 Venkatraman Ramakrishnan (C)
GS102 Stephen Hawking (P & A)	GS122 William Roxburgh (B)
GS103 Amedeo Avogadro (P)	GS123 Erwin Schrodinger (P)
GS104 Johannes Gutenberg (P)	GS124 Nikola Tesla (P)
GS105 Pierre Curie (P,C)	GS125 John Vincent Atanasoff (P)
GS106 Hans Christian Oersted (P & C)	GS126 Heinrich Hertz (P)
GS107 Henry Moseley (P)	GS127 Charles Francis Jenkins (P)
GS108 John Alexander Reina Newlands (C)	GS128 Jacobus Henricus Van'thoff (P & C)
GS109 Camillo Golgi (B)	GS129 Linus Carl Pauling (B & C)
GS110 Zacharias Janssen (P)	GS130 Friedrich Wilhelm Ostwald (C)
GS111 Georg Simon Ohm (P)	GS131 Svante August Arrhenius (C)
GS112 Johann Wolfgang Dobereiner (C)	GS132 Prof. S. R. Kashyap (B)
GS113 Thomas Hunt Morgan (B)	GS133 Frederick Sanger (C)
GS114 Christian Doppler (P & M)	GS134 Kary Banks Mullis (C)
GS115 Girolamo Cardano (P & M)	GS135 Michael Smith (C)
GS116 Robert Hanbury Brown (P)	GS136 G. N. Ramachandran (P)
GS117 Yellapragada Subbarow (B & C)	GS137 Alfonso Corti (B)
GS118 Prof. Yash Pal (P)	GS138 Ernst Mayr (B)
GS119 Josef Stefan (P & M)	GS139 Paul Ehrlich (B)
GS120 Melvin Calvin (C)	GS140 Thomas Young (P)

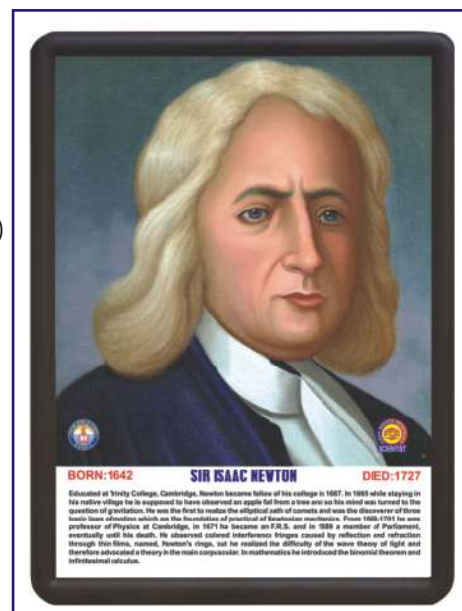


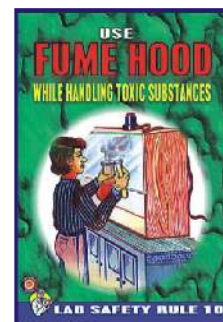
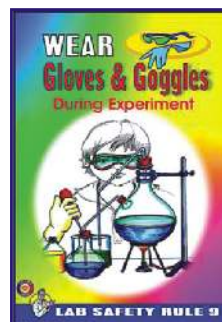
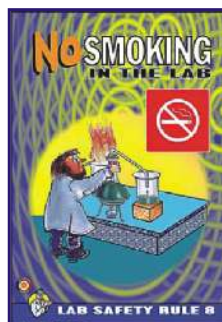
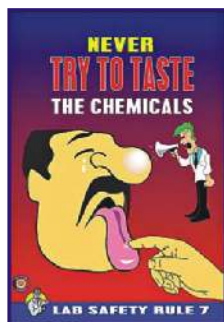
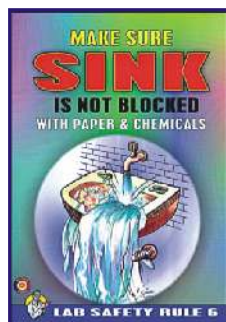
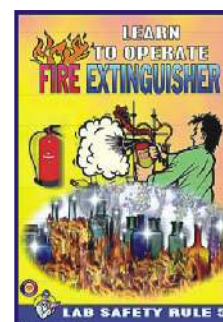
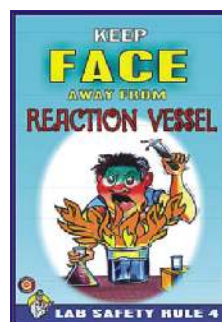
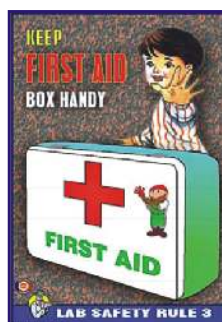
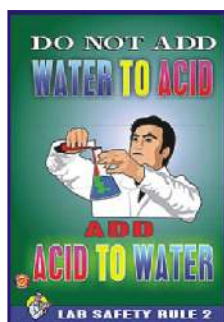
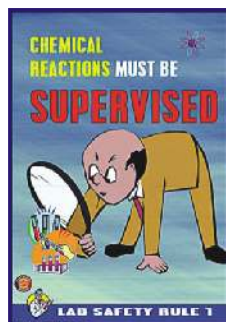
Photo size 45 × 60 cm

(A) Astronomer, (B) Biologist, (C) Chemist, (M) Mathematician, (P) Physicist

LAB SAFETY PHOTOS

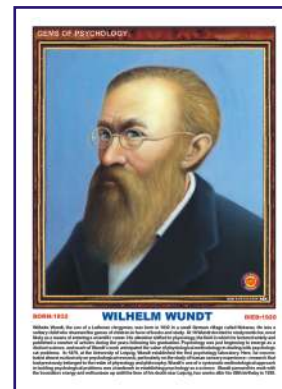
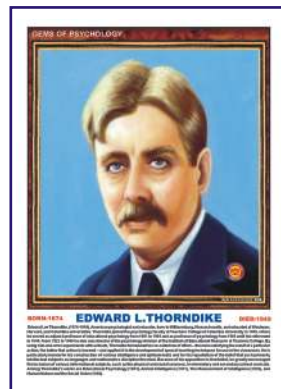
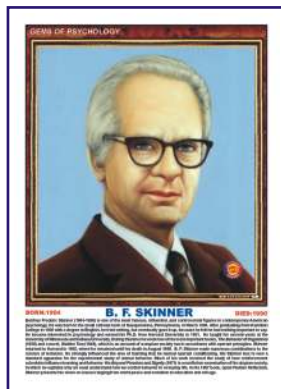
Size 31 × 43 cm Approx (LSP01P - LSP10P)

LSP01P Chemical reactions must be supervised	LSP06P Make sure sink is not blocked with paper & chemicals
LSP02P Do not add water to acid	LSP07P Never try to taste the chemicals
LSP03P Keep first aid box handy	LSP08P No smoking in the lab
LSP04P Keep face away from reaction vessel	LSP09P Wear gloves & goggles during experiment
LSP05P Learn to operate fire extinguisher	LSP10P Use fume hood while handling toxic substances



GEMS OF PSYCHOLOGY

Size 31 × 43 cm Approx (GP01P - GP75P) Size 45 × 60 cm
Approx (GP01PS - GP75PS)



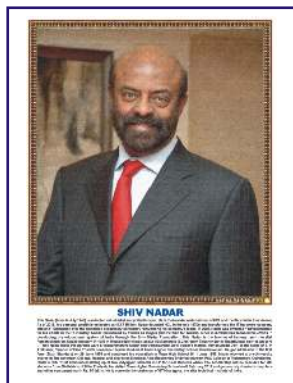
GP01 Abraham H. Maslow
GP02 Albert Bandura
GP03 Alfred Adler
GP04 Alfred Binet
GP05 Aristotle
GP06 B. F. Skinner
GP07 C. L. Hull
GP08 Carl G. Jung
GP09 Carl R. Rogers
GP10 Charles Bell
GP11 Charles Darwin
GP12 Charles Sherrington
GP13 D.O. Hebb
GP14 David Hume
GP15 David Wechsler
GP16 Dr. Cyril Burt
GP17 E. B. Titchner
GP18 E. C. Toleman
GP19 E. H. Weber
GP20 Edward L. Thorndike
GP21 Edwin Guthrie
GP22 Emil Kraepelin
GP23 Erich Fromm
GP24 Erik Erikson
GP25 Ernest Jones

GP26 F. A. P. Aveling
GP27 F. J. Gall
GP28 Francis Galton
GP29 Frederick Perls
GP30 G. S. Hall
GP31 George Kelly
GP32 Gordon Allport
GP33 Gottfried W. Leibnitz
GP34 Gustav T. Fechner
GP35 Hans J. Eysenck
GP36 Harlow
GP37 Heinz Kohut
GP38 Henry Murray
GP39 Herbert Spencer
GP40 Herman Rorschach
GP41 Herman V. Helmholtz
GP42 Hermann Ebbinghaus
GP43 Herry S. Sullivan
GP44 Immanuel Kant
GP45 Ivan P. Pavlov
GP46 J. M. Baldwin
GP47 J. M. Cattell
GP48 J. W. Cannon
GP49 Jean Piaget
GP50 Johann F. Herbart

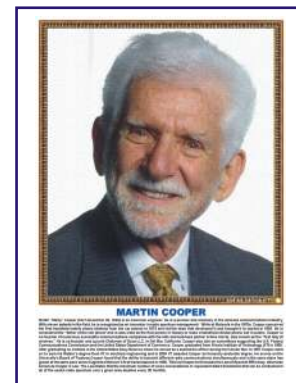
GP51 Johannes P. Muller
GP52 John B. Watson
GP53 John Dewey
GP54 John Locke
GP55 Joseph Wolpe
GP56 Julian Rotter
GP57 K. S. Lashley
GP58 Karen Horney
GP59 Kurt Goldstein
GP60 Kurt Koffka
GP61 Kurt Lewin
GP62 Max Wertheimer
GP63 Melanie Klein
GP64 Neil E. Miller
GP65 Raymond B. Cattell
GP66 Rene Descartes
GP67 Rollo Reese May
GP68 Sigmund Freud
GP69 Thomas Hobbes
GP70 Walter Mischel
GP71 Wilhelm Wundt
GP72 William James
GP73 William Mc-Dougall
GP74 William Sheldon
GP75 Wolfgang Kohler

FAMOUS PERSONALITIES IN COMPUTER SCIENCE

Size 31 × 43 cm Approx (FCS01P - FCS12P)
Size 45 × 60 cm Approx (FCS01PS - FCS12PS)



FCS01 Alan Turing	FCS07 Martin Cooper
FCS02 Charles Babbage	FCS08 Satya N. Nadella
FCS03 Dr. Vijay P. Bhatkar	FCS09 Shiv Nadar
FCS04 George Boole	FCS10 Steve Jobs
FCS05 Lady Lovelace	FCS11 Sundar Pichai
FCS06 Mark Zuckerberg	FCS12 Tim Berners-Lee



HEALTH, HYGIENE & SANITATION

On a persistent demand from various Educational Institutions, NGO's, Rural Development Offices, Nursing Institutions we have recently published naturally coloured, useful and authentic charts incorporating all the modern researches and innovations on the subject. The charts are divided into two main topics as below :

HEALTH CARE SERIES

containing 10 Charts English & Hindi combined

Size 50x70 cm.

- | | |
|------|---------------------------------|
| HC01 | * Health Rules |
| HC02 | * Causes of Diseases |
| HC03 | * Prevention of Diseases |
| HC04 | * Effects of Alcohol |
| HC05 | * Tobacco & Habit Forming Drugs |
| HC06 | * Clean Body |
| HC07 | * Clean Water |
| HC08 | * Constituents of Food |
| HC09 | * Malnutrition |
| HC10 | Immunization |

* Also Available In

English - Kannada

English - Malayalam

English - Tamil

English - Telugu



PREVENT THE DISEASES

containing 24 Charts English & Hindi combined

Each chart depicts the Causes, Symptoms, Treatments, care to be taken.

Size 50x70 cm.

- | | | | |
|------|----------------|------|-----------------------|
| PD01 | * Cholera | PD13 | * Dysentery |
| PD02 | * Malaria | PD14 | Hepatitis |
| PD03 | * AIDS | PD15 | Heart Attack |
| PD04 | Plague | PD16 | Diabetes |
| PD05 | Tuberculosis | PD17 | Asthma |
| PD06 | Leprosy | PD18 | Arthritis |
| PD07 | Influenza | PD19 | Thyroid |
| PD08 | Jaundice | PD20 | Blood Pressure |
| PD09 | Cancer | PD21 | Dengue |
| PD10 | * Typhoid | PD22 | Measles |
| PD11 | Viral Diseases | PD23 | Food Poisoning |
| PD12 | Chicken Pox | PD24 | Poliomyelitis (Polio) |

Laminated

* Also Available In

English - Kannada

English - Tamil

English - Malayalam

English - Telugu



Illustrations are selective. For orders refer the list above.

S-19

DETAILED HUMAN PHYSIOLOGY CHARTS

Printed in original colours. Everything requisite for thorough understanding of Human Physiology in its broad out line included. Each size 70 × 100 cm.

Laminated

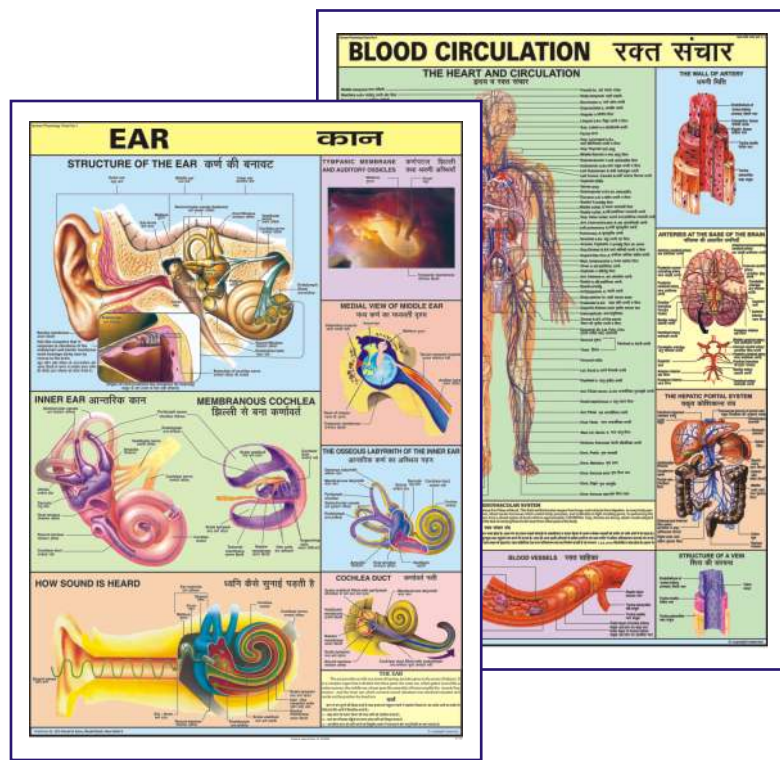
The Skeleton*#	HPM01
Human Muscles*#	HPM02
Blood Circulation*#	HPM03
Nervous System*#	HPM04
Digestive System*#	HPM05
Eye*#	HPM06
Ear*#	HPM07
Kidney, Skin & Excretory Organs*#	HPM08
The Respiratory System*#	HPM09
Human Heart*#	HPM10

Endocrine System	HPM11
Reproductive (Male)*	HPM12
Reproductive (Female)*	HPM13
Human Embryology	HPM14
Lymphatic System	HPM15
English-Hindi combined	
English Only (Add E to the code)	
HPM16E Human Brain Eng	
HPM17E Human Teeth Eng	

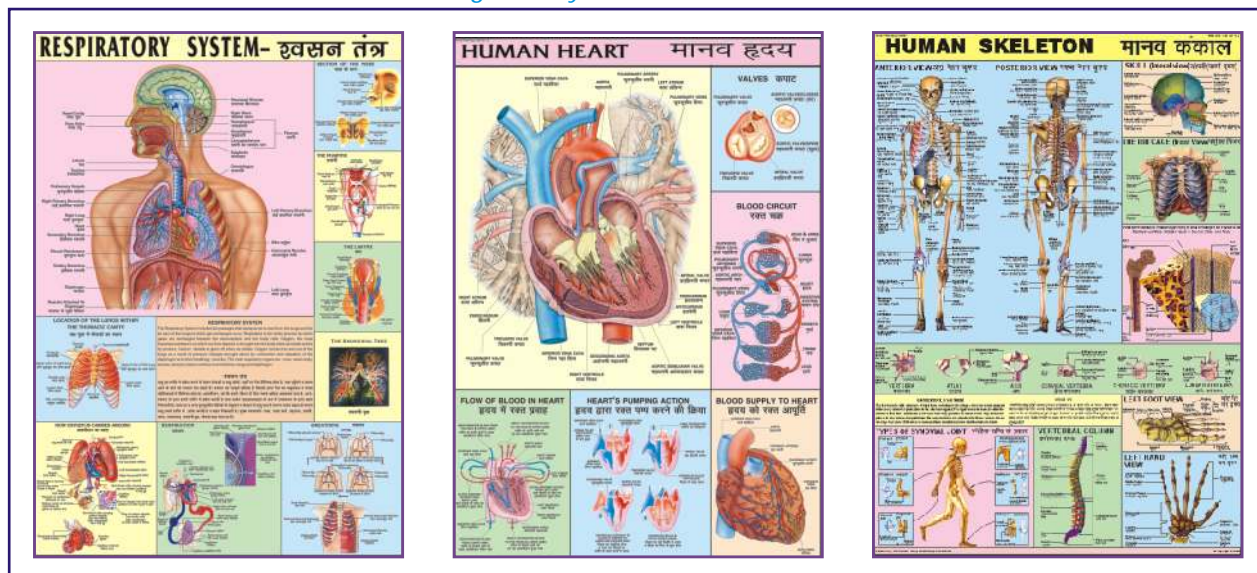
Available in following languages also

*English-Kannada(KN) *English-Malayalam(ML)

English-Tamil(TM) #English-Telugu(TG)



For English only. Add E to the above code



ELEMENTARY HUMAN PHYSIOLOGY

HPS01 to HPS11 Elementary Human Physiology

Size 50 × 70 cms

Laminated

Available in English-Hindi only

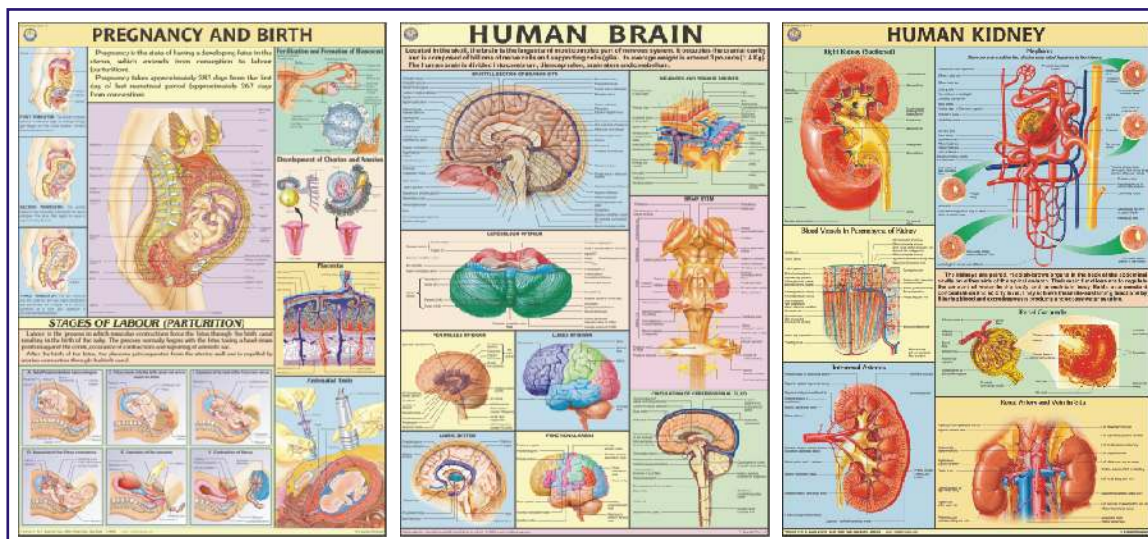
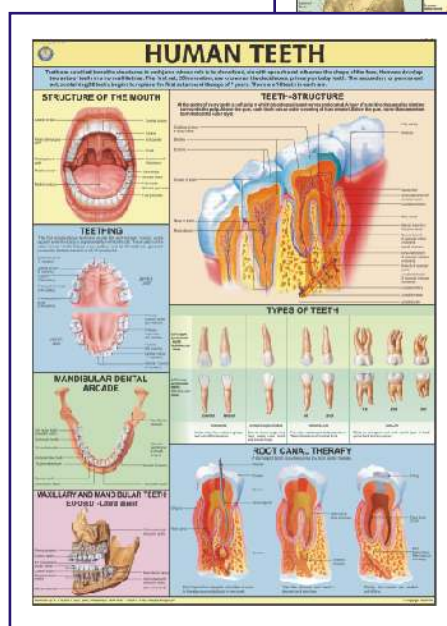
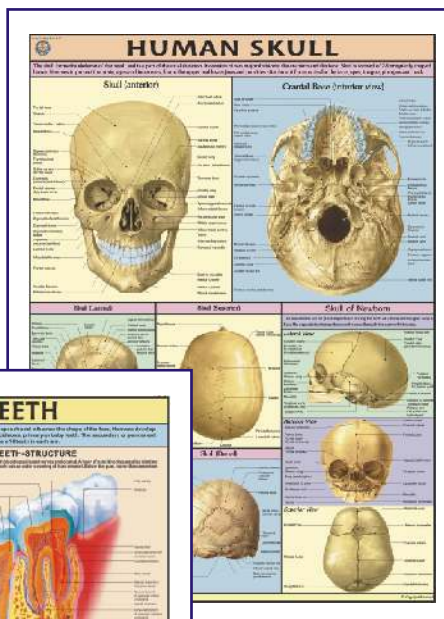
For details please see the first 11 charts given above.



DETAILED HUMAN PHYSIOLOGY CHARTS

Printed on Synthetic in original colours . Everything requisite for thorough understanding of Human Physiology in its broad out line included. Each size 70 × 100 cms. Available in English only.

The Skeleton	HP01S
Muscles.....	HP02S
Blood Circulation	HP03S
Nervous System	HP04S
Digestive System.....	HP05S
Eye	HP06S
Ear	HP07S
Kidney, Skin & Excretory Organs	HP08S
The Respiratory System	HP09S
Human Heart	HP10S
Endocrine System	HP11S
Reproductive (Male).....	HP12S
Reproductive (Female)	HP13S
Human Embryology	HP14S
Lymphatic System	HP15S
Human Brain.....	HP16S
Human Teeth	HP17S
Pregnancy & Birth.....	HP18S
Human Kidney	HP19S
Urinary Tract	HP20S
Human Skull.....	HP21S
Ear, Nose, Throat	HP22S
Liver, Gall bladder & Pancreas	HP23S
Human Lungs.....	HP24S
Joints of the Body	HP25S
Immune System	HP26S
Human Skin	HP27S
Movable Joints (Synovial)	HP28S
Human Spinal Cord.....	HP29S
Menstrual Cycle	HP30S
Contraception (Birth Control)	HP31S
Vertebral Column	HP32S



Service with a smile is guaranteed.

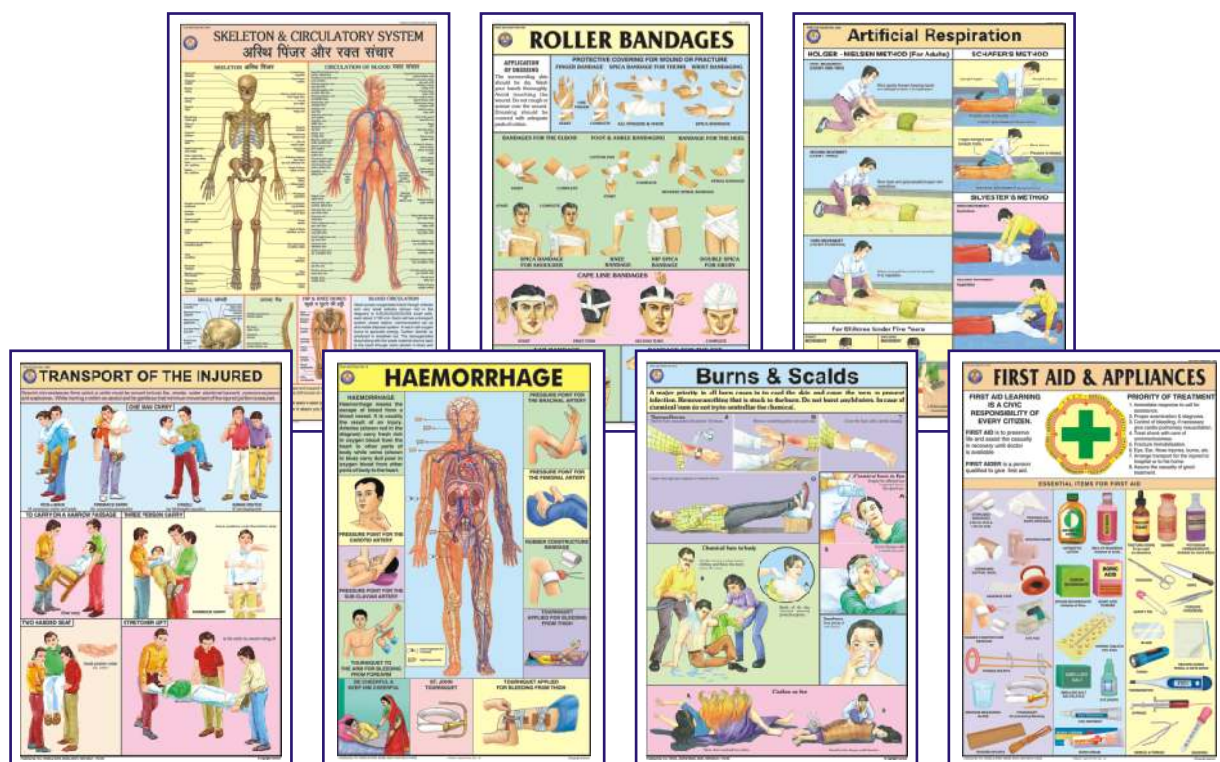
S-21

FIRST AID CHARTS

Each Chart size 50 × 70 cm - English and Hindi combined, Laminated

- FA01 **Skeleton & Circulatory System** : Gives the basic knowledge of human body.
 FA02 **Triangular Bandages** : Slings, knots and bandages for various parts of body.
 FA03 **Roller Bandages** : A protective covering for wound or fracture, methods of bandaging.
 FA04 **Fractures** : Simple & compound fractures, treatment of fracture in parts of body.
 FA05 **Artificial Respiration** : Showing Schafer's method, Silvestor's method & Holger Nielsen's method of artificial respiration. Outline of Respiratory system and what is suffocation.
 FA06 **Transport of the injured** : How to carry an injured person so that minimum movement of the injured portion is assured.
 FA07 **Unconsciousness** : Sun Stroke, fainting, epileptic fit, Infantile convulsions, drowning.
 FA08 **Haemorrhage** : Location of main arteries in the body and pressure points where when pressed, bleeding can be controlled.
 FA09 **Electric Shock Treatment** : How to remove live wires, treatment & whom to contact.
 FA10 **Emergency Resuscitation** : Mouth to mouth and Mouth to nose method. How to give external cardiac chest compression.
 FA11 **Removal of foreign bodies from eye, ear, nose** : Various precautionary methods to remove the foreign bodies and to ensure safety of organs.
 FA12 **Burns & Scalds** : Type of burns, treatment of chemical burns, clothing on fire.
 FA13 **Snakes & Their Bites** : Type of snakes, Identification of snakes on the basis of appearance, treatment of snake bite.
 FA14 **Poisons and their Antidotes** : Types of poisons, their symptoms & their treatment.
 FA15 **First Aid & Appliances** : What is First Aid, Qualities of a First Aider and essential appliances to give first aid.

All the above Charts are available in English only also. Add E to the above code



Some Special Charts

- CD05 Life saving first aid instruction size 70x100 cm
 STG21 Fire & Fire Extinguishers size 58 x 90 cm

COLOURED CHARTS ON YOGA

Each Chart size 50 x 70 cms - Hindi & English combined, Laminated

Price Each chart Rs. 159.00 (B)

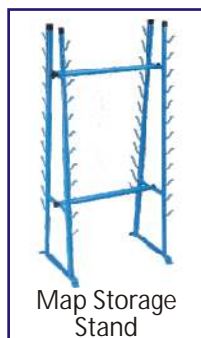
A faithful study and following the instructions as laid down in these charts, a vast treasure of super powers can be explored and developed within ourselves. For all round Physical, Mental, Emotional, Intellectual & Spiritual development of mind and body.

- YO01 1. Shuddhi Kriyas-Shat Karmas** : Kunjal-Vaman Dhauti, Kapal Bhati, Ghrit Neti, Sutra Neti, Jal Neti, Vastra Neti, Dand Dhauti, Nauli Karma, Tratak, Basti etc.
- YO02 2. Shankh Prakshalan** : Kagasan, Tadasan, Triyak Tadasan, Triyak Bhujangasan, Kati Chakrasan, Udarakarashanasan, Shavasan.
- YO03 3. Surya Namaskar** : A series of twelve steps, a complete exercise of all the parts of body. It makes the body strong, beautiful & active.
- YO04 4. Yog Mudras, Padmasan & Matsyasan** : These remove Spinal & Cervical pain, Asthma, Diabetes, Mental weakness, Gastric troubles, Knee pain, Eye Defects.
- YO05 5. Paschimottanasan & Ardh Matsyendrasan** : Spine becomes flexible and Elastic, the Abdominal organs- Digestive system, Nervous system are toned up.
- YO06 6. Vajrasan, Ustrasan & Supt Vajrasan** : These remove cervical and slipdisc defects diseases of chest, lungs, heart, abdomen, kidney etc. , excess fatness of Abdomen and back
- YO07 7. Bhujangasan, Shalabhasan, Dhanurasan & Mayurasan** : Abdominal Organs are toned up. Spine is strengthened. Remove Gastic Intestinal disorders etc. Mental Powers are developed.
- YO08 8. Pawan Muktasan & Chakrasan** : Keep Spine Young & Flexible. Improve Eye sight, Hearing, Smell Taste & Circulation of Blood to the brain.
- YO09 9. Sarvangasan & Halasan** : Reduce fat, make arms, legs, Blood circulation, Digestive system, Liver strong and maintains youthful look etc.
- YO10 10. Bandhas & Pranayams** : Mool Bandh, Jalandhar Bandh, Uddiyan Bandh, Mahabandh. Pranayam Mudra, Lom-vilom Pranayam, Nadishodan Pranayam, Agnisar Kriya.
- YO11 11. Spine & Related Organs** : Composition of spine, Positions of Psychic centres and Endocrine Glands are shown.
- YO12 12. Healthy Eye** : Eye washing, tratak on rising sun, Eye exercises, Palming.



All the above Charts are available in English only also. Add E to the above code

MAP STANDS



MAP STORAGE STAND

DS101 As illustrated for keeping 24 maps made of iron painted.

DS102 For keeping 36 maps made of Iron painted.

MAP DISPLAY STAND

DS103 The map hangs on the stand nearest to the students; it is easy for the teacher also to emphasise on a point. All folding sturdily built of iron pipes. Height Adjustable. Very convenient to carry from one class to another. Painted.



Charts are laminated and fitted with plastic rollers.

S-23

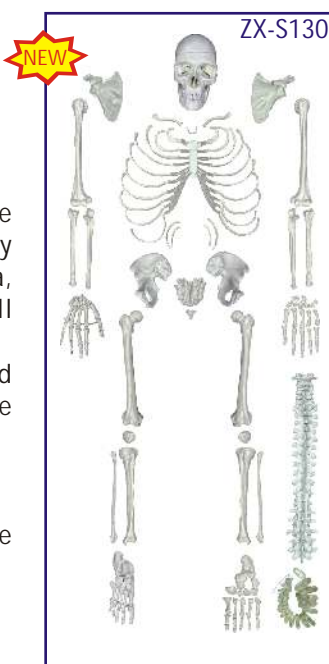
BONES & SKELETON MODELS



ZX-S101

ZX-S101 Human Skeleton Male Life Size Articulated

- Price Rs. 41049.00 (A)
- Life size • Made of PVC
- Bonnet can be removed, Mandible is movable, Teeth are separately installed & all skull foramina, fissures, processes are well depicted.
- Cervical artery, nerves, prolapsed (herniated) disk & hyoid bone shown.
- Coccyx separately mounted.
- Sacral canal clearly depicted.
- Upper limbs & lower limbs can be removed easily.
- Washable & Unbreakable.
- Mounted on stand with rollers.
- Key card / Manual provided.



ZX-S130

ZX-S130 Human Skeleton Disarticulated with Intervertebral Discs

- Price Rs. 22089.00 (A)
- Life size • Made of PVC
- Complete set of 201 pcs.
- Ideal for study of individual bones.
- Skull bonnet can be removed, Mandible is movable & all skull foramina, fissures, processes are well depicted.
- Teeth are separately installed, same as real one, in ceramic white color.
- Right hand and foot are articulated.
- Left hand and foot are disarticulated.
- All intervertebral discs provided.
- Hyoid bone, separate coccyx provided.
- Sacral canal clearly depicted.
- Instructional chart included.
- Key card / Manual provided.



ZX-S102PN

ZX-S102PN Human Skeleton Model 85 cm Numbered

- Made of PVC
- Demonstration of anatomically accurate natural movements.
- The points of origin (Red) and attachment (Blue) of the most important muscles from head to foot are marked in colour on the right side.
- Mounted on stand.
- 49 features marked.
- Key card / Manual provided.



XC-102B

XC-102B Human Skeleton

- Size 85cm Medium.
- Made of PVC plastic.
- Shows nerves and blood vessels.
- Depicts the position, course & distribution of main arteries & peripheral nerves
- Can be employed as a visual aid in the instruction of anatomy to students of medicine.



ZX-S103

ZX-S103 Desktop Skeleton 45 cm

- 45 cm • Made of PVC
- Features three part skull, bonnet can be removed, Mandible is movable & skull foramina, fissures, processes are well depicted. Vertebral column is fixed.
- Flexible arms and legs allow for realistic movement.
- Mounted on stand
- Key card / Manual provided.



SK046

SK046 Mini Skeleton

- Real life Model
- Detachable joints & Durable Parts
- ABS Stand
- Size: 46 cm(18")

ZX-1227

NEW



ZX-1227 Tiny Skeleton, 21cm

- Size : 21 cm height
- Made of PVC
- Well built and informative.
- Features three part skull, bonnet can be removed & all skull foramens, fissures, processes are well depicted. Vertebral column is fixed.
- Flexible arms and legs allow for realistic movement.
- Tiny version of human skeleton model.
- Erect on stand
- Model is accurately made from actual specimen references, photographs and encyclopedia reference under expert guidance.
- Model is great teaching tool for anatomy lessons.
- Key card / Manual provided.

ZX-1224P

NEW



ZX-1224P Fetus Skeleton

- Life size
- Made of PVC
- Human articulated fetal skeleton model.
- 32 weeks fetal skeleton structure shown.
- Skull & legs are detachable.
- Lower jaw is spring loaded enabling it to open and close.
- Model is rigid with stand & base.
- Key card / Manual provided.

ZX-S109

NEW



ZX-S109

Shoulder Joint Model Flexible

- Life size
- Made of PVC
- Show shoulder joint abduction, adduction, forward tilt, backward tilt and inward/outward rotation.
- It is constructed with flexible plastic ligaments.
- Mounted on a plastic base.
- Key card / Manual provided.

ZX-S110

NEW



ZX-S110

Hip Joint Model Flexible

- Life size
- Made of PVC
- Accurate representation of the hip joint and its ligaments.
- It is constructed with flexible plastic ligaments.
- Mounted on a plastic base.
- Key card / Manual provided.

ZX-S112

NEW



ZX-S112

Elbow Joint Model Flexible

- Life size
- Made of PVC
- It consists of lower part of humerus bone and upper part of radius and ulna bones.
- It is constructed with flexible plastic ligaments.
- Mounted on a plastic base.
- Key card / Manual provided.

ZX-S111

NEW



ZX-S111

Knee Joint Model Flexible

- Life size
- Made of PVC
- Model represents a functional model of knee joint with lateral ligaments, meniscus and patellar ligament.
- It is constructed with flexible plastic ligaments.
- Mounted on a plastic base.
- Key card / Manual provided.

ZX-S113A

NEW



ZX-S113A

Foot Joint Model Flexible

- Life size
- Made of PVC
- Accurate representation of the foot joint and its ligaments
- It is constructed with flexible plastic ligaments
- Mounted on a plastic base.
- Key card / Manual provided.

ZX-S114A

NEW



ZX-S114A

Hand Joint Model Flexible

- Life size
- Made of PVC
- All joints are movable according to real human flexibility, with radius and ulna.
- It is constructed with flexible plastic ligaments
- Mounted on a plastic base.
- Key card / Manual provided.

ANATOMICAL MODELS



ZX-1212P

ZX-1212P Muscular Shoulder Joint Model

- Price Rs. 6819.00 (A)

- Life size • Made of PVC • Mounted on a plastic base
- Model is a realistic replica of a right shoulder joint muscles and ligaments.
- Model Features a semi-articulating right rotator cuff with an encapsulated humerus that can be removed from the capsular ligament. This allows demonstration of the rotator cuff's role in both fixing the humerus in the glenoid cavity and depressing it during elevation.
- Model includes eight ligaments and tendons, four bones (acromion, clavicle, humerus and scapula), and five muscles (infraspinatus, teres minor, teres major, subscapularis and supraspinatus) of the shoulder.
- Key card / Manual provided.



ZX-1226A Knee Joint Model Deluxe with Muscles & Ligaments



ZX-1226A

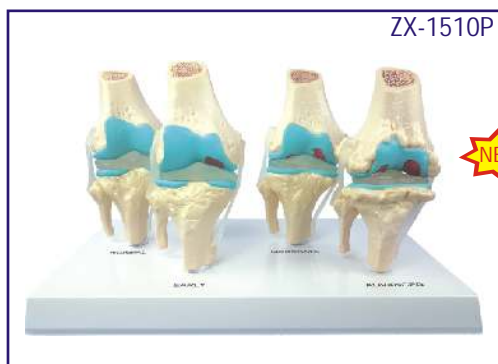
- Life size (29 x 10 x 7.5 cm) • Made of PVC
- Model represents a slightly flexible right knee joint with associated muscles, ligaments and meniscus.
- It shows fibular collateral, tibial collateral, anterior and posterior cruciate, and patellar ligament with patella.
- The extended femur and patellar ligament are connected to top section of the quadricep on this anatomical model.
- The model is constructed with somewhat rigid plastic ligaments.
- Mounted on display stand.
- Model is of superior quality with realistic texture and features and is very informative.
- Key card / Manual provided.



ZX-1225

ZX-1225 Muscular Hip Joint Model

- Life size • Made of PVC
- It is a realistic replica of hip joint muscles and ligaments.
- Mounted on a plastic base.
- Key card / Manual provided.



ZX-1510P

ZX-1510P Knee Arthritis Model

- Size reduced to 3/4 • Made of PVC
- Set of 4 knee models includes a normal knee joint and 3 models illustrating progressive degenerative knee joint disease from early to moderate and finally to advanced stage.
- Models shows osteoarthritic erosion to joint articular cartilage and formed osteophytes (bone spurs) at the articular surfaces.
- Mounted on display stand.
- Key card / Manual provided.



ZX-1203E

ZX-1203E Foot Model

- Life size • Made of HSP resin
- Model shows significant structures of the foot such as muscles, bones and ligaments
- 31 features marked.
- Key card / Manual provided.



ZX-1601

ZX-1601 Bone Microstructure

- 30x20x16 cm • Made of HSP resin
- 3-D section of a lamellar bone.
- It helps to understand the typical elements of a lamellar bone along with the Volkmann & Haversian system, spongy & compact parts, endosteum, cortical substance & osteocytes.
- Model shown various planes in cross and longitudinal section.
- 19 features marked.
- Key card / Manual provided.



ZX-S126

ZX-S126

Vertebral Column Flexible Model Life Size



- Life size
- Made of PVC
- Fully flexible
- It consists of the occipital plate, cervical, thoracic and lumbar vertebrae, sacrum, coccyx and complete pelvis
- Features include representations of the vertebral arteries, spinal nerve branches and a prolapsed L3-L4 intervertebral disc.
- Mounted on stand.
- Key card / Manual provided.



ZX-1505



ZX-1505 Lumbar Vertebrae Degeneration Model

- 35x23x19 cm
- Made of PVC
- Lumbar spine lesion demonstration model showing one pair of normal lumbar vertebrae, one vertebrae set with bulging herniated disc, one vertebrae set with bone/disc degeneration and one vertebrae set showing advanced osteoporosis with bone compression and bone spurs.
- Key card / Manual provided.



ZX-1223P

ZX-1223P

Didactic Vertebral Column, Half Size



- Half size
- Made of PVC
- Fully flexible
- It is differentiated by colours to show 7 cervical vertebrae, 12 thoracic vertebrae, 5 lumbar vertebrae, sacrum and coccyx.
- Model also shows full pelvis and movable mounted femur heads.
- Mounted on stand
- Key card / Manual provided.



ZX-1223

ZX-1223 Spinal Column Model Half Size



- Half size
- Made of PVC
- Fully flexible
- Consists of the cervical, thoracic and lumbar vertebrae, sacrum, coccyx, complete pelvis and femur heads.
- Features include representations of the spinal nerve branches and a prolapsed L3-L4 intervertebral disc.
- Mounted on stand
- Key card / Manual provided.

ZX-S120 Thoracic Vertebrae model Life Size



ZX-S120



- Life size
- Made of PVC
- This model consists of the 12 thoracic vertebrae with intervertebral discs, thoracic nerves and spinal cord.
- In this model, true thoracic skeletal shape is restored, the shape is vivid, and the texture is clear and delicate. Anatomical details such as various bulges, bone sutures, and sulcus vascular indentations are expressed.
- Mounted on stand.
- The model is flexible just like original vertebrae.
- Key card / Manual provided.



ZX-S119

ZX-S119 Lumbar Vertebrae with Sacrum Bone



- Life size
- Made of PVC
- Mounted on a stand
- The shape is vivid, and the texture is clear and delicate. Anatomical details such as various bulges, bone sutures and sulcus vascular indentations are expressed.
- Key card / Manual provided.

Our equipments will raise the standard of your institution.

S-27

ANATOMICAL MODELS



ZX-S104 Skull Model 3 Part PVC

- Life size
- Made of PVC
- Dissectable in 3 parts
- Bonnet can be removed, Mandible is movable & all skull foramina, fissures, processes are well depicted
- Teeth are separately installed, same as real one, in ceramic white color.
- Key card / Manual provided.

NEW



XC-104 Life Size Skull

- This economical life-size adult plastic skull features a moveable jaw, cut calvarium, suture lines and 3 removable lower teeth-incisor, cuspid and molar.
- Dissectible into 3 parts.

ZX-1200 Skull with Removable Lower teeth



- Life size
- Made of PVC
- Dissectable into 4 parts.
- This high quality classic skull with 16 teeth for extraction is medically detailed in structure. The teeth of the lower jaw can be individually extracted and replaced, and have fully formed roots for detailed examination. The model has a bone flap on its right mandible for viewing the dental roots, spongiosa, nerve canal, and an impacted wisdom tooth. The calvaria is removable to show the internal structure of the skull. The mandible is articulated and removable. All of the joints, sutures, fissures, foramen, and styloid processes are highly accurate.
- It is a perfect tool for anatomical and dental study.
- Key card / Manual provided.

NEW



ZX-S135P Skull Model Painted with Cervical Vertebrae

NEW



ZX-1202PN Skull Model Life size Painted-Numbered PVC

- Life size
- Made of PVC
- Dissectable in 3 parts
- Muscle insertions and origins painted in blue and red respectively.
- Bonnet can be removed, Mandible is movable & all skull foramina, fissures, processes are well depicted.
- Teeth are separately installed, same as real one, in ceramic white color.
- 48 features marked.
- Key card / Manual provided.

NEW

- Life size
- Made of PVC
- Dissectable in 3 parts.
- All of the joints, sutures, fissures, foramina and processes are portrayed with utmost accuracy.
- Bonnet can be removed, Mandible is movable, Teeth are separately installed.
- Model also shows cervical vertebrae, cervical nerves, vertebral arteries, basilar artery, cerebral artery and cerebellar artery.
- Mounted on a stand with plastic base.
- All the bones are depicted in different colours, making this model a useful tool to study the correct position and the relationship of all the structures.
- Key card / Manual provided.

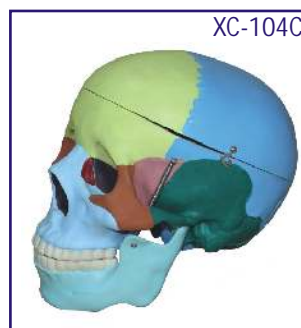
ZX-1208P Didactic Human Skull 22 Parts



- Life size
- Made of PVC
- Consists of 22 parts.
- Suture of each bone is equipped with magnets to assemble easily.
- The 22 bones are depicted in 10 different didactic colors to study the correct position and the relationship of all the structures. Each pair of bone plates has the same color.
- Key card / Manual provided.

NEW

XC-104C Life Size Coloured Skull



- This is advanced model of XC-104 life-size skull, bones painted in different colors for precise study.
- Can be disassembled into 3 parts.

ZX-1232PN Skull with Well Marked Sutures



- Life size • Made of PVC
- Dissectable in 3 parts
- This skull model comes with a removable calvarium (skull cap) to show internal details and removable & an articulating mandible (jaw).
- All suture lines are beautifully painted for easy identification.
- 55 features marked.
- Key card / Manual provided.



XC-104E Skull Model with 8 Parts Brain

- This Model is based on XC-104, includes 8 parts brain: frontal & parietal lobe, temporal & occipital lobe, encephalic trunk & cerebellum.

ZX-1209P Didactic Miniature Skull 15 Parts



- 12.5x9x13 cm • Made of PVC
- Consists of 15 parts.
- Suture of each bone is equipped with magnets to assemble easily. All the bones are depicted in different colours, making this model a useful tool to study the correct position and the relationship of all the structures.
- Key card / Manual provided.



ZX-1204 Miniature Skull Model PVC

- 9.75x7x11 cm • Made of PVC
- Dissectable in 3 parts
- Bonnet can be removed, Mandible is movable. The foramen & fossa are present.
- Key card / Manual provided.



ZX-1201 Human Fetal Skull

- Made of HSP resin having long durability.
- Natural size. Movable lower jaw.
- Total 41 parts labeled.
- Beautifully painted in colours.
- Showing incomplete ossification of skull bones, fontanelles, frontal and parietal eminences, various skull bones like occipital, temporal, sphenoid, frontal, mandible and maxilla.



ZX-S123 Male Pelvis Bone Model

- Life size • Made of PVC
- Easy to study the structures and features of the hip, sacrum, coccyx & pubic symphysis.
- Separate coccyx.
- Sacral canal clearly depicted.
- Key card / Manual provided.



ZX-S124 Female Pelvis Bone Model

- Life size • Made of PVC
- Easy to study the structures and features of the hip, sacrum, coccyx & pubic symphysis.
- Sacral canal clearly depicted.
- Key card / Manual provided.



JOINT SECTION MODELS

- Life size
- Made of PVC
- Mounted on a plastic base.
- Keycard / Manual provided.
- Textures of the spongy and compact bone material, directional striations of the muscle, smooth ribbing of nerve bundles and the smooth lumpy fat areas can be felt over in great detail with this relief model.



ZX-1214P

ZX-1214P

Shoulder Joint Section Model

- Cross section of a human right shoulder.
- This cross section clearly shows the scapula, clavical, humerus and 1st-5th ribs, lateral cord, axillary artery, articular cartilage, deltoid, bicep, ligaments, fat, arteries, veins and dermis presented in one convenient model.



ZX-1215P

ZX-1215P

Hip joint Section Model

- Cross section of a human right hip.
- This cross section clearly shows the bones, cartilage, muscles, tendons and dermis presented in one convenient model.



ZX-1216P

ZX-1216P

Knee Joint Section Model

- Cross section of sagittal section of human knee joint.
- This cross section clearly shows the muscles, bones (including Femur, Tibia, and Patella), vasculature, ligaments, tendons and dermis presented in one convenient model.



ZX-1217P

ZX-1217P

Elbow Joint Section Model

- Cross section of a human elbow.
- This cross section clearly shows the humerus, radius, ulna, muscles and dermis presented in one convenient model.



ZX-1218P

ZX-1218P

Foot Joint Section Model

- Cross section of a human right foot/ankle.
- This cross section clearly shows the bones, cartilage, muscles, ligaments, vasculature, nerves and dermis presented in one convenient model.

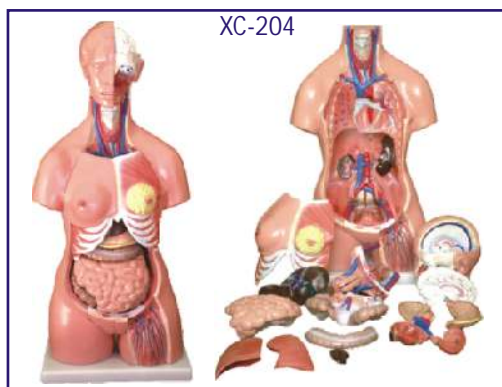


ZX-1219P

Hand Joint Section Model

- Cross section of a human right hand/wrist.
- This cross section clearly shows the bones, cartilage, muscles, tendons and dermis presented in one convenient model.

HUMAN TORSO MODELS

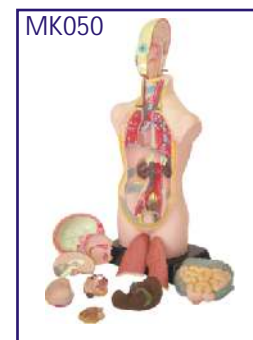


XC-204

XC-204 Unisex Torso 23 parts 85CM

- Dissectible into 23 parts: torso, female breast plate, head, eyeball, brain, vertebra spinal nerves, lung (2 parts), heart (2 parts), liver, kidney, stomach (2 parts), intestines (4 parts), male genitalia (2 parts), female genitalia with fetus (3 parts).

- Size: 33.5" tall (85cm)
- Made of PVC plastic.
- Features an exposed spine with removable vertebra and spinal cord segments.
- Interchangeable male and female genitalia.
- The female organs include a fetus in the womb.
- Mounted on a plastic base.

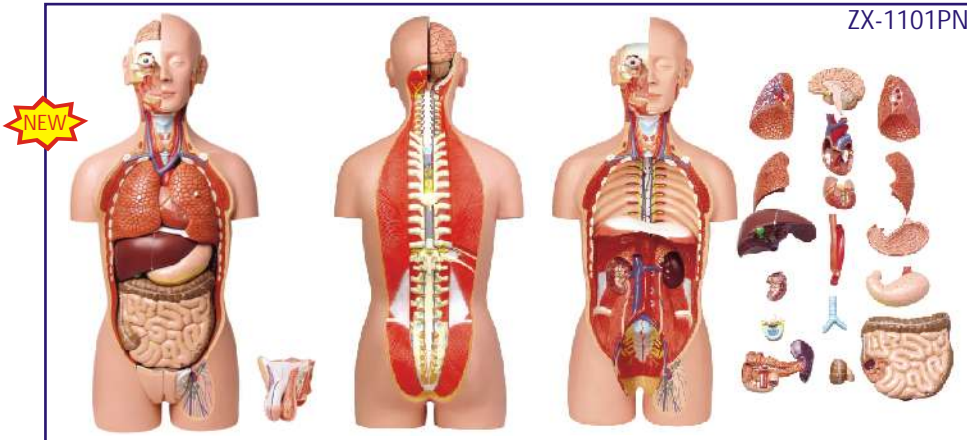


MK050

MK050 Human Torso

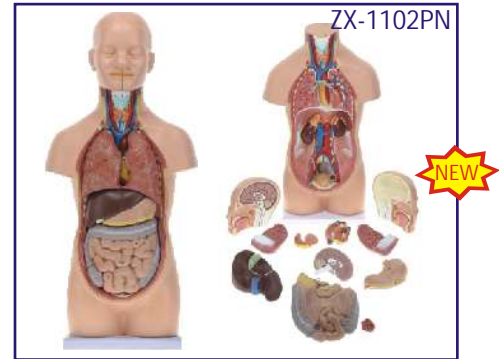
- Hand Painted in Vivid & Natural Colours.
- 50cm High
- ABS Base
- 11 Dissectible Parts
- Fully Illustrated Colour Instruction Manual.

ANATOMICAL MODELS



ZX-1101PN Human Torso Deluxe 85 cm. 27 Parts 2-in-1

- 85 cm • Made of PVC • Dissectable in 27 parts.
- 2-in-1 with removable interchangeable male and female genitalia.
- The mouth cavity and nasal cavity is open.
- The head is open, the cerebrum with cerebellum can be taken out.
- Removable male & female reproductive organ and removable half kidney.
- Lung completely removable. Important structures of thoracic cavity like sympathetic column, azygos vein, hemiazygos vein, thoracic duct are well shown.
- Open neck & back providing full view of the nervous system, brain & whole spinal cord.
- The 12th thoracic vertebra can be taken out for close observation of vertebrae, spinal cord, spinal nerves and 3 layers of maters.
- Key card / Manual provided.



ZX-1102PN Human Mini Torso 50 cm (12 Parts)

- 50cm tall • Made of PVC
- Dissectable in 12 parts.
- The model includes removable lungs, heart, liver, stomach, intestines, and head. Cecum can be easily removed from the intestine for additional internal view.
- The head is bisectable. One half of the brain is also removable. The heart can be bisected as well.
- Hooks & hidden magnets are used to keep the torso together.
- Mounted on a base.
- 73 features marked.
- Key card / Manual provided.

ZX-1103P Human Torso Small



- 28 cm tall • Sexless
- Made of PVC
- Dissectable in 15 parts - trunk, brain (2), heart, esophagus and aorta, lung (4), skull cover, stomach, diaphragm, liver, pancreas & spleen, and intestines.
- Details organs are depicted clearly.
- Mounted on a base.
- Key card / Manual provided.



ZX-1100E Human Torso Small (23 parts)

- Size: 46 x 24 x 12.5 cm.
- Mounted on a plastic base.



MK064 Visible Expectant Mother Anatomy Kit

- Size 55 cm.
- Dissectable in 48 pieces.
- Detailed instruction manual included.
- This visible anatomy model realistically shows the important parts of human body. Learn how body works by taking the model apart & see how the different organs work together to keep us alive & healthy.

ZX-1414P Human Head Model Sagittal Section



- 33x23x5 cm • Made of PVC
- This extremely elaborate model shows the structure of the brain, spinal cord, nasal cavity, oral cavity and larynx.
- Mounted on base.
- Key card / Manual provided.



ZX-1409E Head, Brain and Eye

- Life size • Made of HSP resin
- Model is in 4 parts with 2 parts brain and eye with optic nerve.
- Model shows natural position of nose, mouth cavity, pharynx, occiput & skull base.
- Mounted on board.
- 85 features marked.
- Key card / Manual provided.

Ready stock - rates competitive.

S-31

DIGESTIVE SYSTEM

ZX-1311PN Digestive System Model PVC



- Life size
- Made of PVC
- Dissectable in 2 parts.
- The oral cavity, the pharynx and the first part of the esophagus are dissected along the medial sagittal plane. The liver is shown together with the gall bladder and the pancreas is dissected. The Stomach is open along the frontal plane; the duodenum, caecum, part of the small intestine and the rectum are open to expose the interior. The transverse colon is removable. The relief model of the head shows the anatomy of the mouth with salivary glands.
- Mounted on base.
- 51 features marked.
- Key card / Manual provided.

ZX-1301A Human Digestive System



- Life size
- Made of HSP resin
- Relief model of human digestive system in median section dissectible into 3 parts.
- Duodenum, caecum and rectum are opened. Rectum is unfolded.
- Transverse colon and front half of the stomach are removable.
- The model features the oral cavity, pharynx, esophagus, stomach, liver with gall bladder, pancreas, GI tract and spleen.
- Mounted on sturdy wooden base.
- 56 features marked.
- Key card / Manual provided.

ZX-1446PN

Liver Section & Gallbladder



- Life size
- Made of PVC
- Model shown liver and gallbladder in open section to expose the complex internal network of arteries, veins and bile ducts.
- Model is displayed in bright different colors for clarity and ease of examination.
- Mounted on base with stand.
- 17 features marked.
- Key card / Manual provided.



XC-312 Liver Model

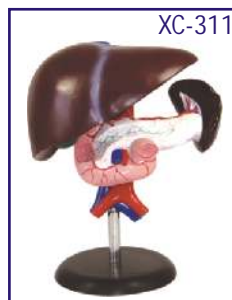
- An economical way to study the basic structure of the liver.
- The complex vessels network in the opened liver, displayed in different colors on this model : hilus vessels, extra-hepatic and intra-hepatic bile ducts. Liver mounted on stand.



ZX-1416PN Liver Model PVC

- Life size
- Made of PVC
- Model shows lobulation, liver ligaments, portal structure, gallbladder, bile duct system.
- Mounted on base.
- 8 features marked.
- Key card / Manual provided.

XC-311 Liver, Pancreas & Duodenum Model

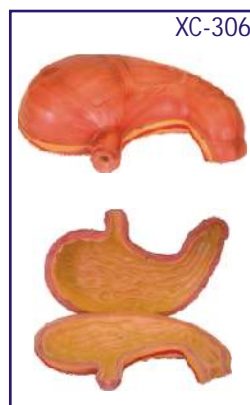


- To study the basic structure of the liver, spleen, blood vessels and pancreas.
- External structure are illustrated as well as the pancreatic duct of the pancreas.
- This model also shows the abdominal aorta & inferior vena cava.
- Life-size. Dissectible into 3 parts.
- Made of PVC. Size: 23 x 12.5 x 26 cm.



ZX-1408 Stomach

- 17x16x25 cm.
- Made of HSP resin
- Dissectable in 2 parts.
- It shows different muscle layers of stomach wall.
- Model shows lower esophagus, vessels and nerves.
- Mounted on stand with base.
- 36 features marked.
- Key card / Manual provided.



XC-306 Stomach Model

- Made of hard plastic
- Magnified 2 times the natural size
- Shows the morphology of the stomach in a distended state.
- With the longitudinal section, the model shows the structures of the gastric folds, pyloric valve, pyloric sphincter muscles, gastric mucosa and the transitional mucosa of the gastric-esophagus.

ZX-1434P Caecum and Appendix, Enlarged



- Size : 1.5 times enlarged
- Made of PVC
- Dissectable in 2 parts
- Mounted on display stand
- Caecum, appendix and its attachment to the large intestine demonstrated.
- Model can be opened to depict folds & texture of internal anatomy.
- Removable portion secured with magnets.
- Key card / Manual provided.

ZX-1514P Rectum Pathologies Model



- Size : 22 x 12.5 x 11 cm
- Made of PVC
- Mounted on display stand
- Pathological conditions of the rectum and anus includes- ulcerative colitis, internal & external fistula, internal & external hemorrhoids, annular cancer, sessile polyp, submucosal abscess, skin tag, pedunculated polyp, supralelevator abscess, ischiorectal abscess, cryptitis, diverticulum, condyloma acuminatum, fissure and condyloma latum.
- Key card / Manual provided.

ZX-1606 Intestinal Villi

- 31x20x43 cm.
- Made of HSP resin.
- Highly enlarged 3D replica model of small intestine shows one entire villus, one sectioned villus with arterioles and venules and one sectioned villus with lymphatic vessels. The model also shows different muscle layers in section.



- Mounted on sturdy wooden base.
- 17 features marked.
- Key card / Manual provided.

ZX-1511P Diabetes Mellitus Complications Model



- Made of PVC
- Easy to remove and assemble.
- The model shows the effects of diabetes on the brain, eye, heart, kidney, artery, pancreas, neuron and foot.
- Model can be used to illustrate effects associated with diabetes: stroke, non-inflammatory disease of the retina, hypertensive heart disease, hardening of the kidney, hardening of the arteries, insulin resistance, neuropathy, and foot ulcerations.
- Key card / Manual provided.

HEART & CIRCULATORY SYSTEM

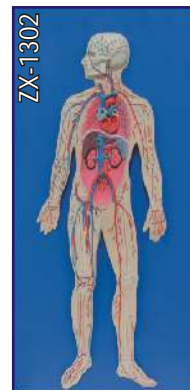
ZX-1312PN Circulatory System Model PVC



- Size : Half Life Size
- Made of PVC
- This model is a half life-size relief model which includes a 2 part removable heart and exceptional details.
- Following anatomical structures are in detail: The arterial/venous system, the heart, the lungs, the liver, the spleen, kidneys, and a partial skeleton.
- Mounted on base.
- 70 features marked.
- Key card / Manual provided.

ZX-1302

Human Circulatory System



- Half life size
- Made of HSP resin
- Model shows following anatomical structures : Arterial and venous system, Heart showing chambers, Liver, Spleen, Lung, Kidneys, Partial skeleton.
- Mounted on wooden base.
- 81 features marked.
- Key card / Manual provided.

ZX-1500 Blocked Artery Model



- 12x8x4 cm.
- Made of HSP resin
- The model shows 4 stage cross section of narrowing of an artery due to build up of cholesterol and plaque.
- Four stages depict normal artery, fatty streak, fibrous plaque & blockage in order.
- All stages rotate on a hinge pin.
- 8 features marked.
- Key card / Manual provided.

ZX-1611E Blood Groups

- 60 x 25 x 6 cm.
- Made of soft PVC
- The model shows eight blood types ie. blood type A-/A+/B-/B+/AB-/AB+/O-/O+ (according to the presence or absence of antigens & Rh factor).
- Mounted on board.
- 12 features marked.
- Key card / Manual provided.



Better equipments give better results.

S-33

ANATOMICAL MODELS



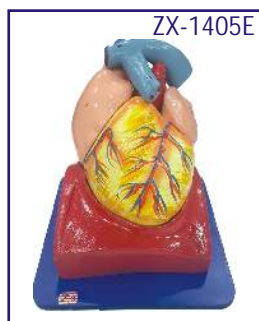
ZX-1424PN
Heart Model Deluxe Life Size 2 Parts

- Life size • Made of PVC • Dissectable in 2 parts
- Model parts held together with hidden magnets.
- The front wall of the heart can be removed and replaced easily, allowing for easy study of the internal structures of the heart.
- Mounted on base • 34 features marked.
- Key card / Manual provided.



PD002
Heart Model

- Full size
- Durable ABS base
- Detachable cover piece.
- Highly realistic decoration.



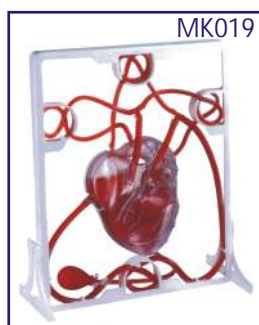
ZX-1405E Human Heart (7 Parts)

- 20 x 20 x 22 cm.
- Made of HSP resin
- Model is sectioned to expose ventricles, atria, and valves.
- Model also depicts blood vessels of heart and heart musculature in detail.
- 33 features marked.
- Key card / Manual provided.



XC-307 Jumbo Heart Model

- Size: 25 x 23 x 23 cm.
- Made of PVC plastic.
- Clear conception of routes of the systemic and pulmonary circulation.
- Dissectible into 3 parts. 4 times enlarged.



MK019 Pumping Heart

- A 3-D working plastic heart model with clear chambers. Squeeze bulb pumps simulated blood through clear heart chambers just like real one.
- Complete heart model with display stand.
- Complete instruction manual, easy to assemble.
- Acrylic Paints & Brush are included.

EYE



ZX-1410 Eye Model on Stand

- 15x15x32 cm. Model is highly magnified (6 times enlarged).
- Model is in 7 parts.
- Ideal for basic anatomical study of eye. shows sclera, cornea, eye muscle attachments, iris, retina, optic nerve & venels.
- Mounted on a removable stand.
- 34 features marked.
- Key card / Manual provided.



XC-316B
Eye with Orbit

- The model shows the eyeball with optic nerves & muscles in its natural position in the bony orbit.
- Dissectible into 10 parts.
- 3 times enlarged.



XC-316 Giant Eye Model

- Size: 15.5cm. Made of PVC. Mounted on a plastic stand. 6 times enlarged Model. The different parts of the eyeball model are detachable.
- Tunica external: showing cornea and sclera with attachments of ocular muscles and optic nerve.
- Tunica media: showing the iris, the ciliary body and the chorioid. Tunica interna is retina.
- Refraction media: showing the lens and the vitreous body.

RESPIRATORY SYSTEM

ZX-1306 Human Respiratory System



- Size : 40x80 cm. • Made of HSP resin.
- Well illustrated and informative.
- Upper half of the model displays nasal cavity, oral cavity, trachea, bronchia, bronchial tree in pulmonary lobe, right and left lungs cut open, heart in situ, pulmonary blood vessels and diaphragm with muscles attached to it.
- Lower half of the model shows enlarged pulmonary acinus displaying pulmonary alveoli, alveolar sacculles, bronchial artery and veins and alveolar capillary network.
- Model is accurately made from actual specimen references, photographs and encyclopedia reference under expert guidance.
- Mounted on wooden sturdy base board.
- 38 features marked.
- Keycard / Manual provided.

XC-301 Human Larynx Model Magnified



- Size : 11.5x11x24 cm, 3 parts dissectible.
- A functional model, On base 3 times enlarged.
- Shows movements of epiglottis & cartilages in the voice box.
- Helps to understand the morphology & structure of the respiratory tract and phonetic organ.

XC-324 Model of the Head



- The relief model of human head shows all relevant structures in great details.
- The high quality model is delivered on a base board for easy display
- Natural size.
- Showing interior parts of the oral cavity and pharynx with network of vessels.

XC-309



- This model helps the students to understand:
- External nose : shows the section of the nasal bones and cartilages.
- Nasal cavity : on the lateral nasal wall show the superior, middle and inferior nasal conchae project medially into the nasal cavity forming the superior, middle and inferior nasal maxillary sinuses.
- Paranasal sinuses : shows the frontal, sphenoid and maxillary sinuses.

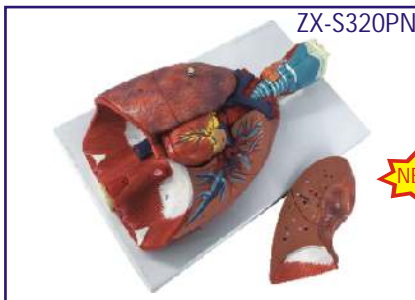
ZX-1444PN



ZX-1444PN Nasal Oral Cavity Model, Sagittal Section

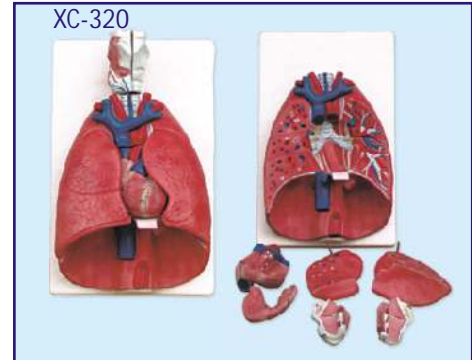
- Life size • Made of PVC
- This model shows the interior parts of nasal cavity, oral cavity, throat and pharynx.
- Sagittal section • Mounted on base.
- 12 features marked.
- Key card / Manual provided.

ZX-S320PN Respiratory System Model 7 Parts PVC



- Life size • Made of PVC
- Dissectable in 7 parts
- Showing the larynx (dissected along the sagittal plane), the lungs (dissected along the frontal plane) & a 2 parts heart.
- Mounted on base.
- 51 features marked.
- Key card / Manual provided.

XC-320



XC-320

Larynx, Heart and Lungs Model

- Life size, 36 x 23 x 12 cm
- Dissectable in 7 parts
- Made of PVC plastic

Ready stock - rates competitive.

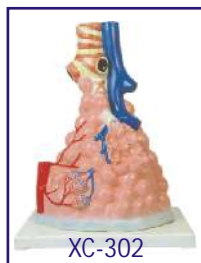
S-35

ANATOMICAL MODELS

XC-302

Pulmonary Alveoli Model Magnified

- Size: 26 × 15 × 35 cm.
- Made of PVC plastic and mounted on plastic base.
- The model shows the small branches of principal bronchus:
- Section of bronchiole of no cartilage.
- The relation between pulmonary alveoli & terminal bronchiole.
- The structure of alveolar sac and alveolar duct
- The capillary rete in the alveolar septa.



XC-330 Model of the Transparent Lung Segment

- Presents 10 segments in the right lung and 8 in the left. The distributions of the bronchial tree can be observed through the transparent lungs.
- Right lung: right upper lobe (3 segments), right middle lobe (2 segments), right inferior lobe (5 segments)
- Left lung: left upper lobe (4 segments), left inferior lobe (4 segments).
- Distribution of the bronchial tree: right bronchus, left bronchus.
- Hilus of lung. The lung made of transparent plastic. The trachea & bronchial tree is made of PVC.



SKIN & EAR

ZX-1604A



ZX-1604A Skin Model

- 21x10x25 cm.
- Made of HSP resin
- Model shows 3-D section of human skin.
- The model represents differentiated skin layers, hair, sweat glands, sebaceous glands, blood vessels, nerves and receptors for detailed examination.
- Mounted on sturdy wooden board for easy display.
- 35 features marked.
- Key card / Manual provided.

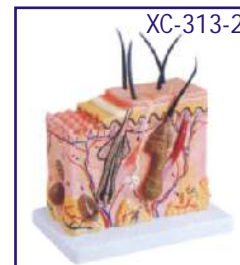
XC-313



XC-313 Skin Model Enlarged

- A greatly enlarged (105 times) cross sectional view of the human skin showing three layers-epidermis, dermis, hypodermis, structures of the human scalp and a close-up view of a hair follicle, sweat gland, fatty tissue, sebaceous gland, blood vessels & nerves. Front, side and back view.
- Mounted on a plastic base.
- Size: 27 × 10 × 31 cm.

XC-313-2



XC-313-2 Skin Block Model

- This model shows a section of human skin in three dimensional forms. Hair, sebaceous and sweat glands, receptors, nerves and vessels are shown in detail.
- 70 time enlarged.

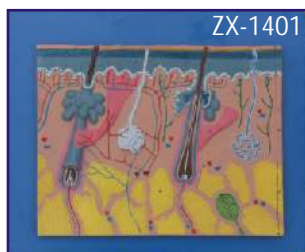
XC-303C

Ear Model New Style Giant Size



- Dissectible in 6 parts.
- Made of PVC Plastic.
- Size 33x15x23 cm.

ZX-1401 Human Skin



- 30x35 cm
- Made of HSP resin
- The skin relief model of a skin section of the head.
- Skin section portrays the anatomy of the skin at 70 times life size and shows:- Representation of hair follicles with sebaceous glands, Sweat glands, Receptors, Nerves, Blood Vessels, Different layers of the skin.
- Mounted on sturdy wooden base.
- 31 features marked.
- Key card / Manual provided.

REPRODUCTIVE SYSTEM

ZX-1304 Human Reproductive System Male

- 40x80 cm. • Made of HSP resin
- Upper half part shows median section of the system.
- Internal organs (accessory organs) shown in great detail are epididymis, vas deferens, ejaculatory ducts, urethra, seminal vesicles, prostate gland and bulbourethral gland.
- External structures shown are penis, scrotum and testicles.
- Lower half shows the model of scrotum and contents along with the penis.
- 41 features marked.
- Key card / Manual provided.



ZX-1305 Human Reproductive System Female

- 40x80 cm. • Made of HSP resin
- Upper half model shows both ovaries, left ovary in section, fallopian tubes with fimbriae, uterus, cut open vagina to show vaginal folds and cervix, bladder with cut open urethra, labia and rectum.
- Lower half model shows adnexa of uterus.
- 56 features marked.
- Key card / Manual provided.



ZX-1417PN Male Pelvis Section Diss. PVC



- 30x22.5x27.5 cm • Made of PVC
- Dissectable in 4 parts
- Open through the medial sagittal section of male pelvis, this model shows the internal organs of urinary, male reproductive system and muscular anatomy
- Mounted on base.
- 26 features marked.
- Key card / Manual provided.

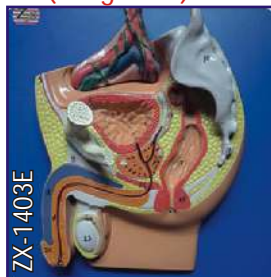
ZX-1418PN Female Pelvis Section Diss. PVC



- 30x22.5x27.5 cm • Made of PVC
- Dissectable in 3 parts
- This model shows the urinary and female reproduction system along with muscular anatomy
- Half of the pelvis is shown, along with a removable attachment to see the outer reproductive organs
- Mounted on base.
- 27 features marked.
- Key card / Manual provided.

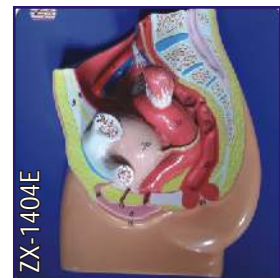
ZX-1403E Male Pelvis Small (Magnetic)

- 25x25x8 cm. • Made of HSP resin
- Model is in 3 parts.
- Median section model shows male genital organs in normal position.
- Model is mounted on board.
- 36 features marked.
- Key card / Manual provided.



ZX-1404E Female Pelvis Small (Magnetic)

- 25x25x8 cm. • Made of HSP resin
- Model is in 2 parts.
- Median section model shows female genital organs in normal position.
- Model is mounted on board.
- 31 features marked.
- Key card / Manual provided.



ZX-1441PN Female Uterus Ovary Model

- Life size • Made of PVC
- It shows sectioned vagina, cervix, uterus, fallopian tubes and ovary with follicles.
- Mounted on a Stand.
- 23 features marked.
- Key card / Manual provided.



ZX-1445P Female Pelvic Anatomy Model

- Size: 18x14x14.5 cm.
- Model is showing anatomy of median sagittal section of the female pelvis.
- Suitable for pharmaceutical promotion.
- Mounted on base.
- Key card / Manual provided.

Better equipments give better results.

S-37

EXCRETORY SYSTEM



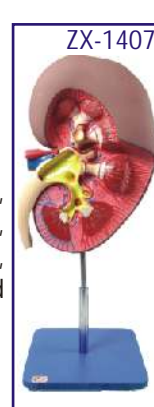
XC-331
Male Urogenital System

- This is intended to understand the external features of the kidney, urinary bladder, penis and testicle.
- Made of PVC Plastic.
- Size 20 x 20 x 50 cm.



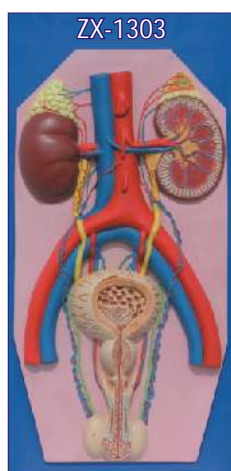
XC-332
Female Urogenital System

- It shows kidney, ureter, urinary bladder, vagina, ovary membrane, uterus, ligaments and artery etc.
- Made of PVC plastic.
- Size 20 x 20 x 50 cm.



ZX-1407 Kidney

- Size: 3x of life size.
- Made of HSP resin
- Shows a longitudinal section of the left kidney.
- Mounted on stand.
- 31 features marked.
- Key card / Manual provided.



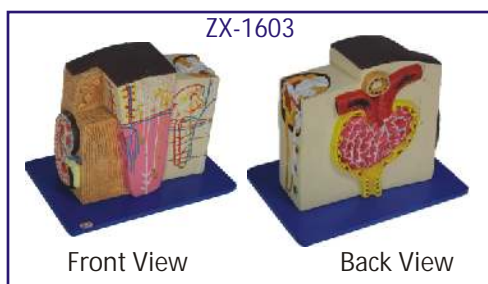
ZX-1303 Human Excretory System

- 40x80 cm • Made of HSP resin
- Delivered on wooden baseboard for easy display.
- It shows the structures of the retroperitoneal cavity which includes : descending aorta, inferior vena cava, renal veins and arteries, ureter, urinary bladder cut open to show trigone and other structures, adrenal glands, both kidneys, iliac vessels and prostate gland.
- Left kidney and left adrenal gland in section.
- Model also shows testis and penis in section.
- The model has anatomical details that makes it a great teaching aid.
- 36 features marked.
- Key card / Manual provided.



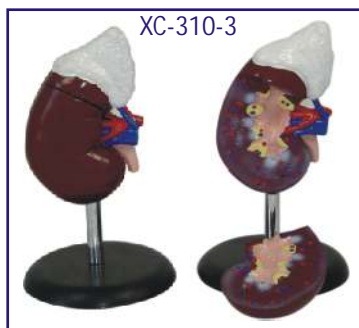
ZX-1513P Kidney Pathologies Model

- Size: 15 x 9 x 3 cm.
- It shows pathological complications of a kidney like infection, scarring, atrophy, urinary (kidney) stones, tumors, polycystic disease and hypertension on one side.
- The other side shows a normal kidney features.
- Mounted on base.
- Key card / Manual provided.



ZX-1603 Kidney Microstructure

- 30x20x24 cm • Made of HSP resin
- Beautifully painted in advanced colours.
- A complete 3-D model shows 5 sides view of following structures in great details : kidney in section, parenchyma of kidney and nephron, renal corpuscle and associated structures, loop of henle and associated structures.
- Mounted on sturdy wooden base.
- 45 features marked.
- Key card / Manual provided.



XC-310-3 Human Kidney with Adrenal Gland

- Life-size model features the kidney, adrenal gland, renal and adrenal vessels and upper portion of the ureter.
- Dissectible into 2 parts to reveal the cortex medulla, cortex vessels and renal pelvis.
- Model can be removed from the stand for instruction and patient education.
- Size: 12.5 x 12.5 x 20 cm.



ZX-S333P Urinary System Block Model Dual Sex, 6 Parts

- Life Size • Made of PVC
- Mounted on stand. • Dual sex
- It shows components of urinary system, posterior abdomen wall, kidney, adrenal gland & bladder.
- It also shows pelvic bone and muscles, Inferior vena cava, aorta with its branches including iliac vessels and Rectum.
- One front half of a kidney is removable
- Key card / Manual provided.

BRAIN & NERVOUS SYSTEM

XC-308 Brain with Arteries



- Made of PVC plastic.
- Dissectible into 8 parts. On base.
- Natural size: 18.5×14×13.5cm.
- External features of the brain: cerebral hemisphere, brain stem, cerebellum.
- The arterial supply of the brain: sources, vertebral, internal carotid arteries, arterial supply of the cerebellum and cerebrum.

XC-318 Brain With Arteries on Head



- This model shows the brain structure inside the skull. Two halves brains can be disassembled into: frontal with parietal lobes, temporal with occipital lobes, half of brain stem, half of cerebellum.
- Life-size, dissectible into 9 parts.

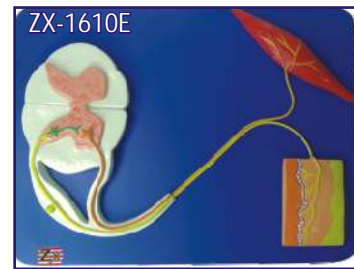
ZX-1422PN



Brain Model Deluxe Enlarged 4 parts

- Size : 1.5 times enlarged
- Made of PVC
- Dissectable in 4 parts
- Showing the temporal and occipital lobes, the frontal & parietal lobes, the cerebellum, the brain stem in different colors.
- Mounted on metal stand with wooden base.
- 142 features labeled & relevant descriptive names written directly on model.
- Key card / Manual provided.

NEW



ZX-1610E Reflex Arc

- 30x40x3 cm.
- Made of HSP resin
- The model shows sensory, neural & motor elements of a complete reflex arc.
- Mounted on sturdy wooden base.
- 22 features marked.
- Key card / Manual provided.

ZX-1317PN

Nervous System Model PVC



- Size : Half size
- Made of PVC
- Well illustrated and informative
- Beautifully painted in bright colors
- Model is accurately made from actual specimen references, photographs and encyclopedia reference under expert guidance.
- Model is great teaching tool for anatomy lessons.
- Mounted on base.
- 33 features marked.
- Key card / Manual provided.

NEW

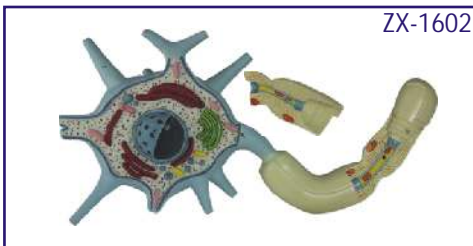
ZX-1307

Human Nervous System



- Half life size
- Made of HSP resin
- Model is a schematic representation of the central and peripheral nervous system, including spinal nerves radiated from central nervous system to other parts of body.
- Mounted on wooden base board.
- 39 features marked.
- Key card / Manual provided.

ZX-1602



ZX-1602 Neuron

- 30x20x12 cm
- Made of HSP resin.
- Motor neuron model in three-dimension.
- Model shows branching dendrites, myelin-wrapped axon and node of Ranvier.
- Removable axon section shows cytological ultra structure, layers of myelin sheath, neurolemma and schwann cell.
- 19 features marked.
- Key card / Manual provided.

A vivid display will go deep down in the memory.

S-39

CPR MANIKINS

MB001B+ (AD)



MB001B+ (AD)

CPR Training Manikin Advance (Torso)

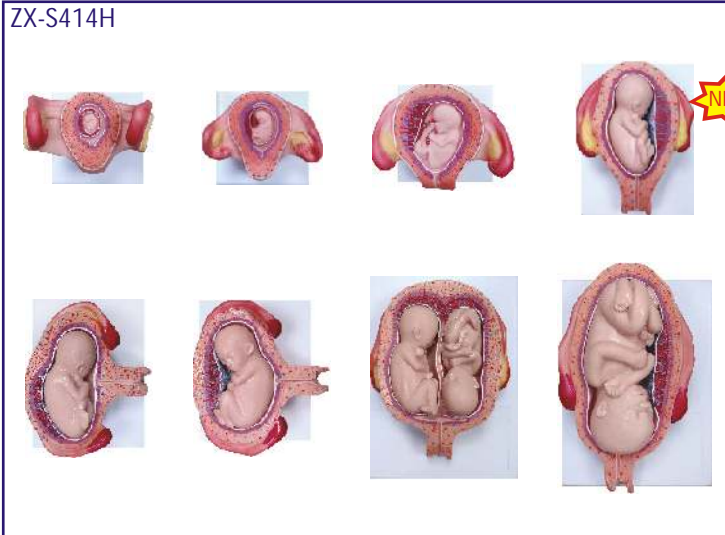
- Features and Function:
- Two in one simulator - Adult/Child
- Exclusive three position selector dial
- Breathing function : Real-like system
- Jaw thrust maneuver
- AED compatible (AED not included)
- Ultra hygienic
- Unique one-way valve
- Realistic opening of airway
- Clicking sound to check correct compression depth
- Accessories include Travel Bag.

MB001 (AD) CPR Training Manikin Advance (Torso)

- MB001 (AD) same above but without Travel Bag.

GYNAE & OBSTETRIC MODLES

ZX-S414H



ZX-S414H

Fetal Development Model set of 8

- Size : Half size
 - Made of PVC
 - Each model mounted on separate base.
 - Shows the development from ovum to the fetus in 7th month.
- | | |
|---------------------------------------|--|
| A: 1st Month Embryo | E-I: 5th Month Foetus (Transverse Lie) |
| B: 2nd Month Embryo | E-II: 5th Month Foetus (Transverse Lie) |
| C: 3rd Month Embryo | E-III: 5th Month Twin Foetuses (Normal Position) |
| D: 4th Month Foetus (Breech Position) | F: 7th Month Foetus |
- Key card / Manual provided.

ZX-1706PN Human Embryo Model, Enlarged (Four weeks old)



- Size : 25 times enlarged
- Made of PVC
- 20 parts labeled in total.
- Well illustrated and informative.
- Great for studying human development and having as a desktop model for quick reference and for education.
- Key card / Manual provided.

ZX-1700PN Human Placenta Model with Cord



- Size : Life size
- Made of PVC
- It shows structure of placenta from maternal & fetal side both.
- It also shows the relation between placenta and umbilical cord.
- Umbilical cord clearly shows umbilical vessels
- Maternal side: shows dark maroon structure of the decidua featuring the cotyledons
- Fetal side: reveals the amnion (amniotic membrane) partially removed, exposing the intervillous space.
- 8 features marked.
- Key card / Manual provided.

DENTAL MODELS



ZX-1427



ZX-1427

Teeth Care Model Enlarged with Giant Teeth Brush

- 15x16x22cm, 3 x Life size
- Made of PVC
- Model shows complete set of teeth with gums & tongue.
- A flexible joint between the jaws allows easy movement.
- Key card / Manual provided.



TH002

TH002

Dental Model Small

- 1.5 × Model with Hinge.



ZX-1442

ZX-1442

Dental Model Life Size

- Life size
- It shows the upper & lower jaw hinged with rod & screw.
- 28 fixed non removable teeth shown.
- Key card / Manual provided.



ZX-1411

ZX-1411

Dental Care Model

- Highly enlarged dental model with normal tooth brush.
- Size : 22x16x15 cm.



ZX-1443

ZX-1443 Dental Practice Typodont Model



- Life size
- 28 removable teeth in this model.
- Students will be able to practice preparing the teeth for restoration, whether that is cavity fillings, crowns, or bridges.
- The model features plastic teeth screwed with metal screws in place, soft gingiva, and a soft palate. One crosshead mini screwdriver is provided to remove the teeth.
- A metal hinge holds the top and bottom jaws together.
- Key card / Manual provided.



ZX-1512P



ZX-1512P Dental Caries Model

- Size: 4 times enlarged
- Shows cavities in 3 molars removable from gum sockets.
- Each molar is longitudinally sectioned in 2 parts.
- 3 progressive stages of cavities (shallow, medium and deep) are shown, one in each molar.
- Morphological structure of the molar tooth is well depicted.
- Key card / Manual provided.

BUILD YOUR ANATOMY MODELS

- New Type of Puzzle • Highly Detailed Finish • Collectible Quality • Dissectable in Small Parts • Display Stand •



SK007

SK007

Eyeball Anatomy Model

- Size 14 cm
- 35 pieces set.

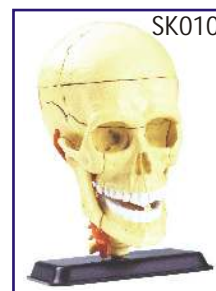


SK009

SK009

Heart Anatomy Model

- Size 14 cm
- 31 pieces set.



SK010

SK010

Cranial Nerve Skull Anatomy Model

- Size 9 cm
- 39 pieces set.

We are sole distributor of  models.

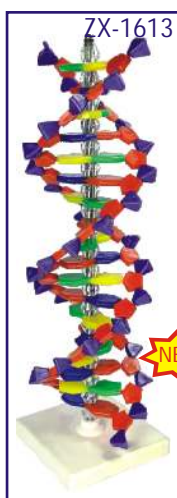
S-41



EXPLOR EET
UNCOVER, DISCOVER & ACHIEVE

Contact No : 9890904660 | 7768003827

HISTOLOGY AND BIOMOLECULES MODELS



ZX-1613 DNA Model

- Stands 40cm tall
- Made of Plastic
- Mounted on stand.
- 18 layers, 9 each of AT & GC.
- Handy demonstration model of DNA helix.
- Parts are colour coded and represent purines, pyrimidines, deoxyribose & phosphate groups that make up the double helix of DNA.
- Model is great teaching tool.
- Key card / Manual provided.



DN001 DNA Model Kit

- Made of Plastic.
- Ready to assemble model.
- Size: 10 x 10 x 45 cm.

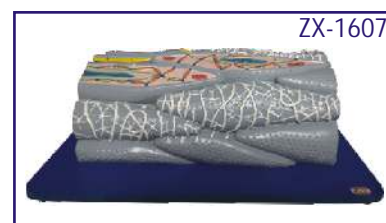


ZX-1608 Cardiac Muscle Fibre

- Block model is greatly enlarged cardiac muscle fibre.
- The model shows significant anatomical structures such as sarcolemma, nucleus, mitochondria, transverse tubules, cardiomyocytes, sarcoplasmic reticulum, intercalated disc, M line, Z disc & various filaments.
- Mounted on durable wooden base.
- Size: 41 x 20 x 19 cm
- 17 parts labeled in total.

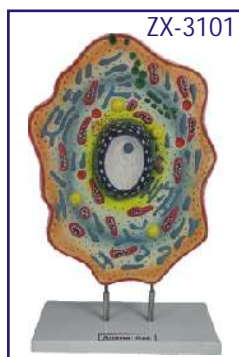
ZX-1609 Skeletal Muscle Fibre

- Block model is greatly enlarged model of skeletal muscle fibre.
- Model shows various anatomical structures like neuromuscular junction, T tubules, myofibrils, bands, nucleus etc.
- Mounted on wooden base.
- Size: 20 x 20 x 19 cm • 21 parts labeled in total.



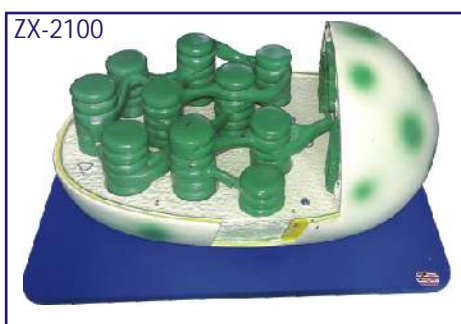
ZX-1607 Smooth Muscle Fibre

- Block model is a greatly enlarged smooth muscle fibre.
- The model shows significant structures including sarcoplasm, nucleus, mitochondria, dense body, filaments, autonomic neurons and gap junction.
- Size: 36 x 25.5 x 13 cm
- 18 parts labeled in total.



ZX-3101 Animal Cell Model

- Made of high grade synthetic polymer having long durability.
- Delivered with removable stand.
- Size: 30x40x10 cm.
- Well illustrated & informative.
- 19 features marked.
- Beautifully painted in bright colors.



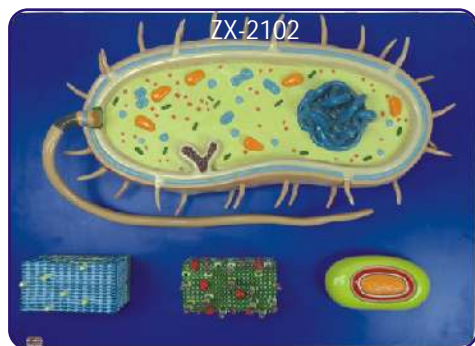
ZX-2100 Chloroplast

- Block model is highly enlarged open section of a typical chloroplast.
- Model shows inner & outer membranes, granum, stroma, DNA, starch granule, Osmiophilic globule and thylakoids.
- Mounted on sturdy wooden base.
- Size: 36 x 25.5 x 19 cm.
- 13 features marked.



ZX-2101 Mitochondria

- Block model is highly enlarged open section of typical mitochondria.
- Model shows outer and inner membranes, cristae, ribosomes, matrix, mitochondrial DNA, etc.
- Mounted on sturdy wooden base.
- Size: 41 x 21 x 13 cm.
- 10 features marked.



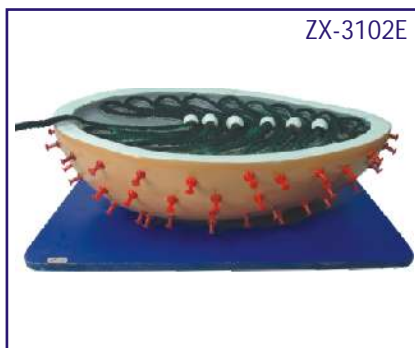
ZX-2102 Bacterium

- Model is greatly enlarged bacterium model depicting anatomical complexity of a general prokaryotic cell.
- The model is a set of 4 models including block models of the cell wall of gram positive and gram negative bacteria, opened bacterial spore showing spore coat & internal structures and main bacterium.
- Mounted on sturdy wooden base.
- Size : 55x40x9.5 cm.
- 34 features marked.



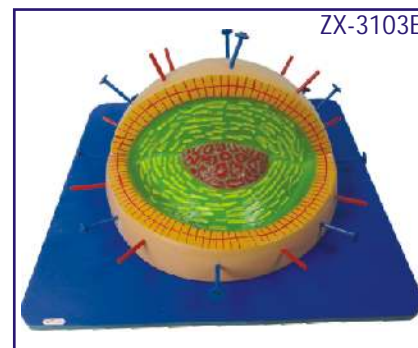
ZX-3100E AIDS VIRUS

- Highly enlarged detailed model of HIV (Human Immunodeficiency Virus) commonly called AIDS virus.
- Model shows outer lipid membrane with protein structures, internal nucleus with viral RNA.



ZX-3102E Rabies Virus

- Model of rabies virus is enlarged millions of times to show viral RNA, lipid envelope, glycoprotein, polymerase etc.
- Mounted on wooden base.
- Size : 35x25x10 cm.
- 6 features marked.



ZX-3103E Influenza Virus

- This millions of times enlarged model of influenza virus shows lipid envelope, capsid, nucleoprotein, hemagglutinin and neuraminidase.
- Mounted on wooden base.
- Size : 35x35x16 cm.
- 5 features marked.

ROCKET MODELS



ZX-4111 ROCKET GSLV Mk-III

- The Geosynchronous Satellite Launch Vehicle (GSLV) Mk-III is the most prestigious rocket developed by India. It is the embodiment of the struggles of dedicated ISRO scientists for the development of propulsion fuels, engines, avionics, and other electronic and control systems. By creating a vast satellite network and assuring a reliable launch capability, the program aims to meet India's demands for telecommunications, environmental monitoring, disaster warning, and other systems in addition to easing the nation's entry into the global space market. The GSLV Mk-III has been declared operational after two trial flights. The GSLV Mk-III can place satellites weighing 2000-2500 kg into the Geosynchronous Transfer Orbit (GTO). The GSLV Mk-III is a three-stage vehicle. The first stage consists of two S200 solid boosters attached to the core rocket. The second stage of the main rocket is a liquid-fueled stage. The third stage is powered by a single CE-20 engine, which is the first cryogenic engine developed by India.
- To promote interest towards India's space mission in our young generation, we have developed a model of the GSLV Mk-III rocket for display in our schools in astronomy / geography lab. The details are as below:
 - Height of the main rocket: 181 cm.
 - Diameter of the main rocket: Approx 20 cm.
 - Size of the Base L X B X H: 76 X 45 X 13 cm.
 - Height of the rocket boosters: 113 cm.
 - Diameter of the rocket boosters: Approx 14 cm.

TELESCOPE & BINOCULAR

TELESCOPE (F70060)

- Objective dia : 60 mm
- Coated Lens
- Aluminium tripod
- 1.5x & 3x Barlow lens
- Focal length : 700 mm
- Eyepiece : 20mm/12.5mm/4mm
- Magnification : 35x/56x/175x



10 x 50MM BINOCULARS (BN1050)



- 10x magnification
- Focussing Knob
- Neck strap
- Eye piece with rubber coating
- 50mm dia objective
- Rubber covered body
- Superior Lenses

ROCKET MODELS



ZX-4100E ROCKET MODEL

- Small size. Height 44 cm.

ZX-4101E ROCKET MODEL

- Large size. Height 71 cm.

SCIENCE TEACHING KITS

CS015 STUDENT BALANCE KIT

- 4 x Weights
- 4 x Arms
- 2 x Weighing pans
- 2 x Levers
- 2 x Triangle axials
- 2 x Pointers
- 2 x Scales
- 1x Central Axial
- 1x Pivoted weight
- 2 x Arms side holders



TK7074

Age
8+



TK7074 Go Weather

- Over 30 fascinating activities all about weather and climate.
- Kit includes a real wind speed indicator.
- Build your own barometer, weather vane, rain gauge and hydrometer.
- Observe the weather traits and see how they'll affect tomorrow's weather!
- Make a rainbow, produce clouds, lightning, rain and even a thunderstorm



AM001 ATOMIC MODEL SET SUPERIOR

- The set consists of moulded balls and sticks of different colours and size arranged in different size lugs.
- The set is very helpful in modelling different compounds with the help of given keycard.
- Box size : 51 x 39 x 7 cm.

TK4003

Age
8+



TK4003 Wake Me Robot

- Place it next to your bed at night.
- In the morning when light falls on it, the robot will start to move and buzz.
- Easy to assemble - no soldering required.

TK8405

Age
10+

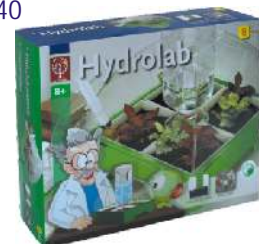


TK8405 Solar Power

- 150 Challenging Experiments.
- Build a solar electric generator, motor, water heater, furnace, thermometer, crane and solar energy mobiles.
- Unique experiments with colour optics, electroplating, stroboscopes, thermodynamics and Moire patterns.

TK8740

Age
8+



TK8740 Hydrolab

- Complete greenhouse system for cultivating plants and vegetables in an "indoor" environment, without soil, using a modern Hydroponics system.
- Kit comes with a base, fertilizer tank, adjustable translucent observation cover, 4 growing trays, safe chemicals & bedding for propagating growth of plants.

TK8360

Age
10+

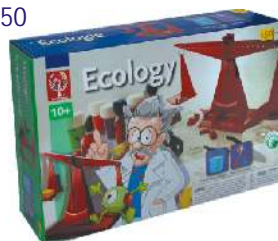


TK8360 Super Chem 150

- 150 exciting science activities using only products found in the kitchen.
- There are over forty pieces of equipment enabling you to carry out all of the 150 activities.
- These activities include the following science phenomena: chemistry, optics, bubbles, magnetism, physics and chromatography.
- The kit includes an attractive four colour book.

TK8650

Age
10+



TK8650 Ecology

- 150 Experiments dealing with ecology.
- Topics include bacteriology, climate, water, air, nature, chemical analysis, water and soil pollution, recycling and acid rain.
- Understand the problems & improve the environment.

TK8950

Age
10+



TK8950 Energy

- More than 200 experiments.
- Kit gives an understanding of the various kinds of energy sources, how to transform them and use them.
- Learn about windmills, levers, solar energy, batteries, electricity, electrochemistry and more.
- Make your own simple machines.

Induces learning in all science subjects.

S-45

COMMUNITY HEALTH MODELS

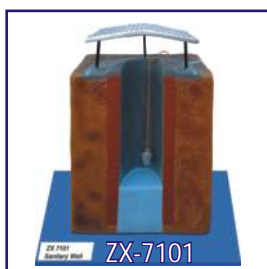
- Made of high grade materials having long durability
- Mounted on sturdy wooden frame for easy display
- Supplied with well illustrated informative literature

- Well labeled parts
- Beautifully painted in bright colors
- Model is a great teaching tool for nursing students

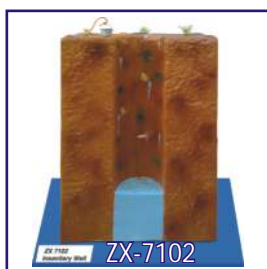
COMMUNITY HYGIENE

ZX-7101 - Sanitary Well
 ZX-7102 - Insanitary Well
 ZX-7103 - Deep and Shallow Well
 ZX-7104 - Deep Tube Well

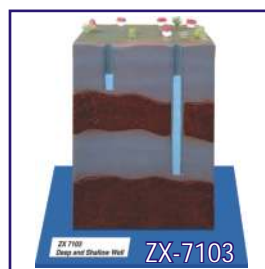
ZX-7105 - Step Well
 ZX-7106 - Berkefeld Filter
 ZX-7107 - Slow Sand Filter
 ZX-7108 - Rapid Sand Filter



ZX-7101



ZX-7102



ZX-7103



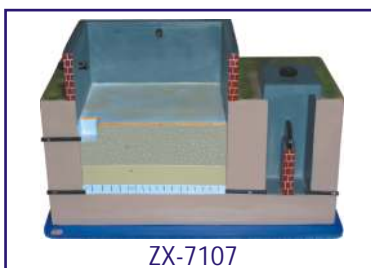
ZX-7104



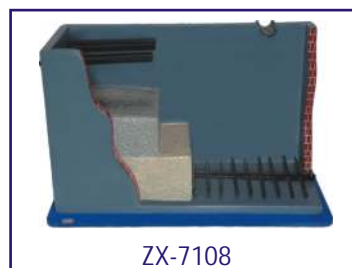
ZX-7105



ZX-7106



ZX-7107



ZX-7108

ENVIRONMENTAL SANITATION

ZX-7201 - House Drainage System.....
 ZX-7202 - Chamber Type Incinerator.....
 ZX-7203 - Activated Sludge Process.....
 ZX-7204 - Bore Hole Latrine
 ZX-7205 - Dug Well Latrine (Pit Latrine) .

ZX-7206 - Trench Latrine
 ZX-7207 - Septic Tank Latrine
 ZX-7208 - Biogas Plant
 ZX-7209 - Smokeless Chulha.....



ZX-7201



ZX-7202



ZX-7203



ZX-7204



ZX-7205



ZX-7206



ZX-7207



ZX-7208



ZX-7209

SCIENCE WORKING MODEL

PHYSICS



PH 1014 S
Working of Switch - DIY



PH 1036 C Conductor and
Insulator - DIY



PH 1013 S Mag. Spring /
Repulsion of Magnets -DIY



PH 1034 T Make Your
Own Sundial - DIY



PH 1003 S
Levitation of Pencil - DIY



PH 1042 C
Yarn Spindle - DIY



PH 1043 S Fibre to Fabric -DIY



PH 1008 S
Working of LED - DIY



PH 1019 S Uses of
Pulley In Our Life - DIY



PH 1007 S
Day and Night - DIY Kit



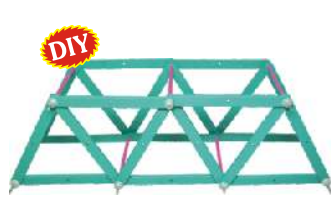
PH 1025 S Infinite Images
(Parallel Mirrors)- DIY



PH 1044 S Make Your
Own Compass - DIY



PH 1045 C Multi Circuit
Panel Board - DIY



PH 1046 C Make Your
Own Bridge - DIY



PH 1021 T Bernoulli Bag (
Capacity of Lungs) - DIY



PH 1086 S
Elastic Powered Boat - DIY



PH 1047 C Electricity and
Magnetism Kit - DIY



PH 1048 S Electromagnet
Making Kit



PH 1049 S Electromagnetic
Repulsion - DIY



PH 1016 C Mixing of Col.
& White Light
Formation

DIY = Do it yourself

S-47

WORKING MODELS



PH 1018 C
Ray Box (Lenses Kit)



PH 1050 C
Anemometer - DIY



PH 1015 S
Reflection of Light Kit -
DIY



PH 1051 T
Mag. Levitation
& Maglev Train - DIY



PH 1052 T Working
Model of Tornado - DIY



PH 1053 S Kaleidoscope
Making Kit - DIY



PH 1037 T
Conduction Of Heat - DIY



PH 1005 S Frictionless
Propeller Kit - DIY



PH 1054 S Wind Powered
Crane - DIY



PH 1010 S
Airfoil Designs
& Shapes - DIY



PH 1024 S Calculate. no.
of Reflection-DIY



PH 1017 S Centrifugal
Force in The Earth Kit- DIY



PH 1029 S Air Pressure &
Atomic Pressure - DIY



PH 1033 T Static
Electricity Kit - DIY



PH 1055 C Hydraulic Arm - DIY
(without bottle)



PH 1039 T RGB DIY Kit



PH 1056 S
Air Powered Car - DIY



PH 1030 S Wind Mill
DIY Kit (Air Pressure)



PH 1011 T
Density of Material Kit



PH 1012 S Sprinkler - DIY



PH 1057 T
Lever And Fulcrum Fn. Kit - DIY



PH 1022 S Properties of
Air Kit - DIY



PH 1020 S
Working of Rope Way - DIY



PH 1058 S
Electric Propeller Boat - DIY



PH 1006 S Working
Model of Gyroscope



PH 1031 S
Balloon Car - DIY



PH 1059 T
Twin Pendulum - DIY



PH 1060 T Up Hill Cone (Small) - DIY



PH 1061 C Motion Car



PH 1062 T Working Model
of Trebuchet - DIY



PH 1063 C Sound and
Vibration Kit - DIY



PH 1001 S
Magnetic Gun - DIY



PH 1027 S Buoyancy &
Archimedes Principle - DIY



PH 1004 T
Maxwell's Wheel



PH 1040 T
Heating Effect
From Electricity - DIY



PH 1064 C
Series Connection - DIY



PH 1069 T Total Internal
Reflection Kit - DIY



PH 1070 T
Tesla Coil



PH 1074 C
Syringe Generator



PH 1071 S
Toy Telescope

Similar to above, following DIY
kits are also available:

PH 1065 C Resistance In Series and
Parallel

PH 1066 C Working of A Resistance

PH 1067 C Variable Resistance
Graphite

PH 1068 C Magnetism From
Electricity

PH 1076 C Parallel Connection

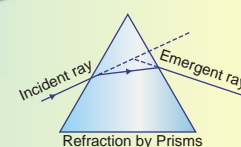
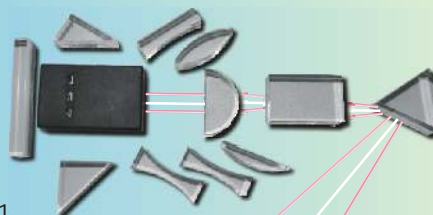
LIGHT AND OPTICS CLASS DEMO KIT Magnetic Featured Ray Box And Blocks

This light and optics kit is a very handy tool for science teachers. It demonstrates the laws of reflection and refraction. **Product Code: PH 1092 C Price Rs. 4,219.00 (A)**

The kit consist of:

- Ray box-1
- Convex lenses-4
- Concave lenses-3
- Slab-1
- Prisms-3
- Rectangular light block-1.

The ray box can project 3 beam of light in 2 colours
Supplied with teacher's support guide



Better education is a great national gain.

S-49

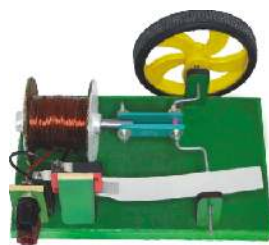
WORKING MODELS



PH 1072 T
Hand Generator
with Pulley - DIY



PH 1087 C
Pulley System - DIY



PH 1075 T
Solinoid Engine



PH 1077 C
Solar Reading Lamp



PH 1041 T Electric
Motor Kit - DIY



PH 1028 S Potential Energy
In Twisted Elastic- DIY



PH 1078 T
Catapult - DIY



PH 1002 T
Hydraulic Jack



PH 1081 T
Eddy Current in
An Aluminium Tube



PH 1079 T
Hydraulic Arm Lift



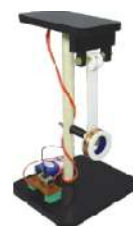
PH 1080 S
Screw Jack - DIY



PH 1035 T
Capillary Action - DIY



PH 1082 T
Magnetic Brake



PH 1083 T Magnetic
Induction Pendulum



PH 1084 T
Charkha Generator



PH 1023 S Newton's III Law
(Amphibian Car) - DIY



PH 1088 T
Fidget Generator



PH 1089 C
Magic RGB Cubes - DIY



PH 1090 C
Gear Driven Generator

FUN SCIENCE KITS



FN 15002 S
Slime Kit - DIY



FN 15003 S
Soap Making Kit - DIY



FN 15001 S
Snow Making Kit - DIY



FN 15004 S
Magic Sand - DIY



FN 15005 S
Bike on Rope - DIY

CHEMISTRY



CH 110 T
Chromatography - DIY



CH 103 S Fats, Protein & Carbohydrates Testing Kit- DIY



CH 114 S
Budding Crystal Kit - DIY



CH 109 S
What Is Litmus & Indicator - DIY



CH 107 S
What Is pH Scale - DIY



CH 111 S
Chemical Reaction



CH 115 C Lemon Battery - DIY
(without multimeter)



CH 116 C
Inflate Balloon - DIY



CH 112 C
Water Filter Kit - DIY



CH 113 T
Electroplating - DIY



CH 117 S
Fireproof Balloons - DIY



CH 118 T Chemical Reac.
(Elephant Toothpaste)-DIY
(without bottle)



CH 101 S
Density of Liquids Kit - DIY



CH 102 S Miscible
and Immiscible Liquids Kit - DIY



CH 119 S
Rapid Oxidation Kit - DIY



CH 105 S
Properties of Carbon Dioxide - DIY



CH 120 T
Solutions, Suspensions & Colloids - DIY



CH 106 S
What Are Common Acid & Bases - DIY



CH 108 S Acid Base Reaction CO₂ - DIY



CH 104 S Acid Bases & Their Properties - DIY



CH 121 C Prod. of Hydrogen & Oxygen - DIY

3 DIMENSIONAL INTERACTIVE PERIODIC TABLE

Product Code: CH 122 C

- Wall mountable
- Detachable element cubes
- 118 Cue cards for teachers
- Colour codes depict the state of elements.
- Below characteristics are depicted on each side of cube:-
 - Element symbol
 - Atomic number
 - Element name
 - Electron structure
 - Atomic weight
 - Electronegativity



- Real life co-relation of elements
- Teacher's hand book
- Size: 103x65 cm

Modern Periodic Table

BIOLOGY



BG 10001 T
Body Movements
DIY Kit



BG 10004 S
Study of Seed Germination -
DIY



BG 10003 C Types of
Food We Eat - DIY



BG 10002 T Resp. Sys.
In Human Being - DIY

ROBOTICS



RT 20001 C
Robo Air Car - DIY



RT 20002 C
Wind Power Dynamo - DIY



RT 20003 C
Gear Motor Car - DIY



RT 20004 C
Fluid Turbine - DIY



RT 20005 C Wind Mill - DIY



RT 20006 C Robo Car - DIY



RT 20007 C
Robo Conveyor Machine - DIY



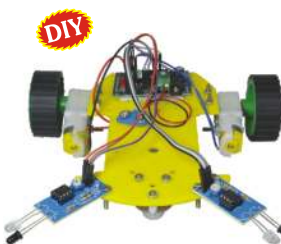
RT 20008 C Solar Car - DIY



RT 20009 C Industrial Lift
Gear Model - DIY



RT 20010 C
Tank With Robotic
Arm



RT 20011 C IR-VR Sensor Robo Car -
DIY



RT 20012 C Sound and
LDR Based Robo Car -
DIY

VISUAL TEACHING AIDS

OPTIONAL ACCESSORIES

OA01	Projection Screen 70"×52" (175 × 130 cms) with folding tripod stand.
OA02	Projection Screen 60"×60" (150×150 cms) with folding tripod stand.
OA03	Projection Screen 90"×72" (225×180 cms) with folding tripod stand.
OA04	Map Screen made of thick white rexine with roller 175×130 cms.
OA12	Blank Overhead Projector Transparencies - 210×297 mm. Packet of 100 sheets
OA32	Laser Pointer Pen type with button cells

OVERHEAD PROJECTOR TRANSPARENCIES

• Price per transparencies Rs. 119.00 (A)

• Available in set only

OT01	Botany set of 75	OT09	Chemistry set of 40
OT02	Zoology set of 75	OT10	Human Physiology set of 50
OT08	Physics set of 50	OT13	First Aid set of 50



2"×2" COLOURED 35 mm SLIDES HEALTH SECTION

• Available in set only

HEALTH CARE

each set contain 20 slides

SHC01	Health Rules
SHC02	Causes of Diseases
SHC03	Prevention of Diseases
SHC04	Effects of Alcohol

SHC05	Tobacco & Habit Forming Drugs
SHC06	Clean Body
SHC07	Clean Water
SHC08	Constituents of Food
SHC10	Immunization

OTHERS

SH01	Human Physiology set of 50
SH03	Yogasan set of 20
SH07	First Aid set of 50
SH09	Mothercraft set of 30
SH13	Community cleanliness set of 8

ZOOLOGY SECTION

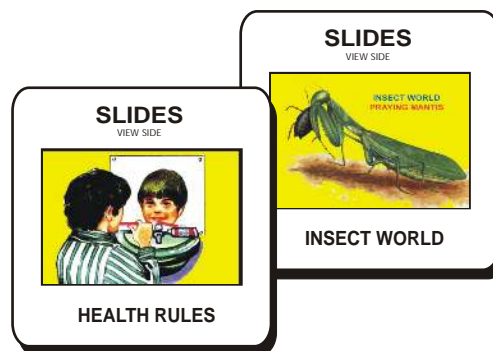
• Available in set only

SZ03	Amoeba & Paramecium set of 20
SZ05	Animal Kingdom set of 30
SZ07	Beaks & Feet of Birds set of 20
SZ10	Earthworm set of 20
SZ11	Chick Embryology set of 20
SZ12	Frog Embryology set of 15
SZ13	Rabbit Embryology set of 20
SZ14	Evidence of Evolution set of 20
SZ19	L.H. Butterfly set of 10
SZ21	L.H. Housefly set of 10
SZ22	L.H. Mosquito set of 10
SZ23	L.H. Silkworm set of 10
SZ26	Meiosis set of 15
SZ28	Mitosis set of 10
SZ29	Prehistoric Animals set of 20
SZ32	Snakes set of 20

BOTANY SECTION

• Available in set only

SB03	Bacteria set of 20
SB06	Dispersal of Seeds set of 20
SB09	Germination of Seeds set of 20
SB16	Meiosis set of 15
SB17	Mitosis set of 10
SB20	Plant Kingdom set of 30
SB22	Pollination set of 10
SB23	Roots set of 20
SB25	Stems set of 20
SB27	Water Plants set of 10
SB28	Botany set of 30



SPECIAL SLIDES

SSS04	Histology set of 100
SSS05	Pathology set of 100
SSS06	Chemistry Album for 10+2 set of 100
SSS07	Physics Album for 10+2 set of 100
SSS09	Human Physiology set of 100

BIO VIEWERS

BV01 Slide viewer for Viewing Slides in available light

Biostrips are available on various subjects. Biostrips can be prepared on any subject (Minimum quantity 50 each title).

Ready stock - rates competitive.

S-53

INDIAN SCHOOL SYLLABUS ON VIDEO

From Hazel Dolbrien of the U.K. Any one CD Rs. 559.00 (A)

BIOLOGY			PHYSICS		
Code	Title	Time (in mins.)	Code	Title	Time (in mins.)
E01	Sleepy Heads, Amoeba, Protista.	41	E22	Light, Measurement of Acceleration of Gravity, Very Low Temperature, Reflection, Refraction & Polarisation of Light.	53
E02	How Insects Develop Part -I & II, Life of the Forest.	49	E23	Photoelectric Effect, prelude to Power, Refraction, Reflection & Scattering of Light	51
E03	What are Cells, Role of the Cell Membrane, Peripheral Nervous System.	57	E24	Dioxide Characteristics, Power, heat as a Radiant Energy.	42
E04	The Woods, Woodlands: Plant Movements, What is Autumn, What is Spring.	52	E25	Buoyancy, Vibrations, learning about Sound.	51
E05	About Your Body, Tissues of the Human Body, Body Fights Diseases.	43	E26	Magnetism part-I, II & III.	49
E06	How Seeds are Scattered, Dispersal of Seeds and Fruits, How Seeds Grow.	52	E27	Friction, Colour from light, magnetism, Magnets & their uses.	40
E07	Life Cycle of Insects Part -I & Part -II, life story of the Earthworm, food feeding habits.	47	E28	Conquest of the atom, X-Ray Diffraction, Principles of Nuclear Fission.	55
E08	Process of Pollination, Germination & Growth of plants, Life Cycle of Flowering Plants, Animals Breathe in many ways.	54	E29	Electricity (Fundamentals), pressure & Current, Electrical sources.	55
E09	Meiosis, Mitosis, Circulatory System.	51	E30	Introducing the Oscilloscope, Electromagnetic Waves, Isotopes.	53
E10	Temperature Regulation, Chemistry of The Cell Part -I & Part II.	52	E31	Electromagnetic Waves Part-I & Part -II.	42
E11	Effect of Light on Oxygen Production, effect of Chlorophyll & Carbon Dioxide on Oxygen production & Starch Formation, Plants Make Food, Photosynthesis.	56	E32	Waves & Vibrations, Young & the Theory of Light, Principles of T.V.	54
E12	Circulation of the Heart, Respiratory, Reproductive & Nervous System.	50	E33	Velocity of Gamma Rays, Learning About Heat, Discovery of Radioactivity.	46
E13	Liver, Digestive System Part-I & Part -II, Lymphatic System.	54	E61	Steam & Steam Generation Time Measurement & Meaning.	51
E14	Tissue Respiration, How Plants Move, Coral Reef Community.	51	E62	Energy From the Sun, How it works.	41
E43	Growing Plants, Fungi & man, Fungi.	47	E63	Actions & reaction, Rotational Dynamics.	34
E48	Insects, Roots & Plants that help us.	44	E64	Fuels for the Future, How Machines help us.	47
E49	Genetic Investigation, Genetics & Plant Breeding, Pattern Developments.	43	E65	Rockets, Doppler Effect, Wave Particle Quality, Newtons II Law.	53
E50	Autumn Brings Changes, Spring Brings Changes, Flying Birds.	44	CHEMISTRY		
E51	Parasites, Microbiology: Microbes & their Control, Diffusion & Osmosis, Structure of Protein.	54	Code	Title	Time (in mins.)
E52	Autonomic Nervous System & Drugs.	35	E34	Atoms & Molecules (Properties of matter), Chromatography, Combustion.	47
E53	Life Cycle of a Frog, Skeleton, Skin as a Sense Organ, Egg & Sperm.	50	E35	Acids, Bases & Salts, Physics & Chemistry of Water.	41
E54	Sense Perception Part-I & Part-II	55	E36	What is Soap?, Sodium Family, Nitric Acid Compounds & Nitrogen Cycle.	48
E55	Introduction to Dissection, Work of Kidneys	42	E37	O for Oxygen, Strange case of Liquid Oxygen	44
E103	Human Brain Part-I: The Self	50	E38	Atomic Model & The Periodic Table.	44
E104	Human Brain Part-II: Language	50	E66	Crystallisation, Distillation.	49
E105	Human Brain Part-III: Fear	50	E67	Properties of Matter I & II.	46
E106	Human Brain Part-IV: Memory	50	E68	Properties of Matter III, IV & V.	55
E107	Human Brain Part-V: Seeing	50	E69	Basic Laboratory Techniques I.	54
E108	Human Brain Part-VI: Madness	50	E70	Basic Laboratory Techniques II.	60
			E71	Basic Laboratory Techniques III.	45
			E72	Preparation of Oxygen: Demonstration, Development of Electrochemistry, ABC of NPK, Facts about Fertiliser.	52
			E73	Vanadium: A Transistor Element, metals & Non- metals, Silicon & its Compounds.	57
				Diamonds a Metal working	42
			E94	Rutherford Model of An Atom	42

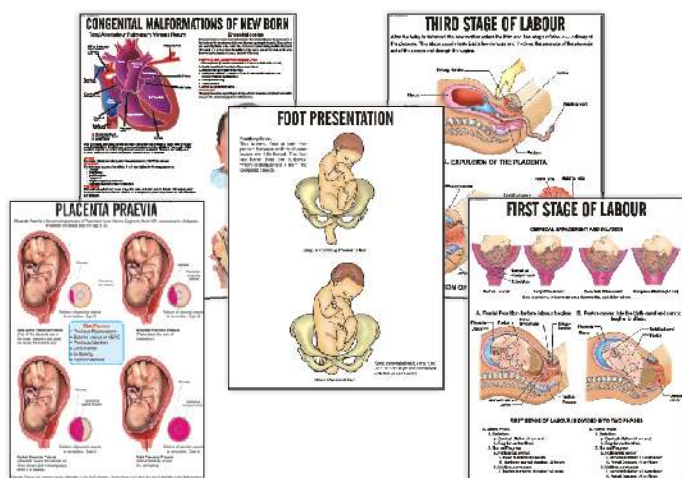


Teaching Learning Material for Medical & Nursing Institutions

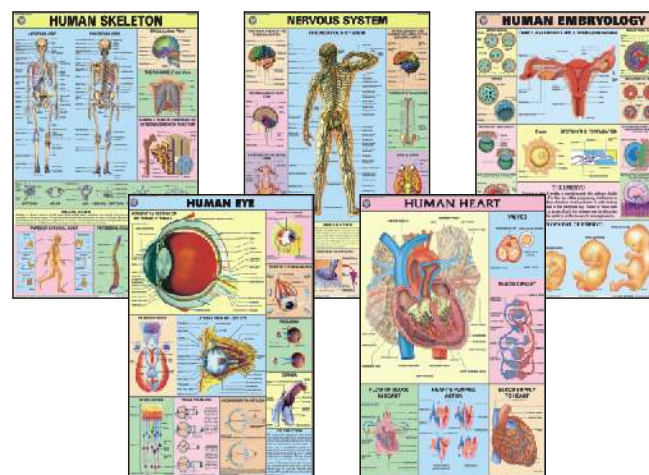
MODELS, MANIKINS & SIMULATORS



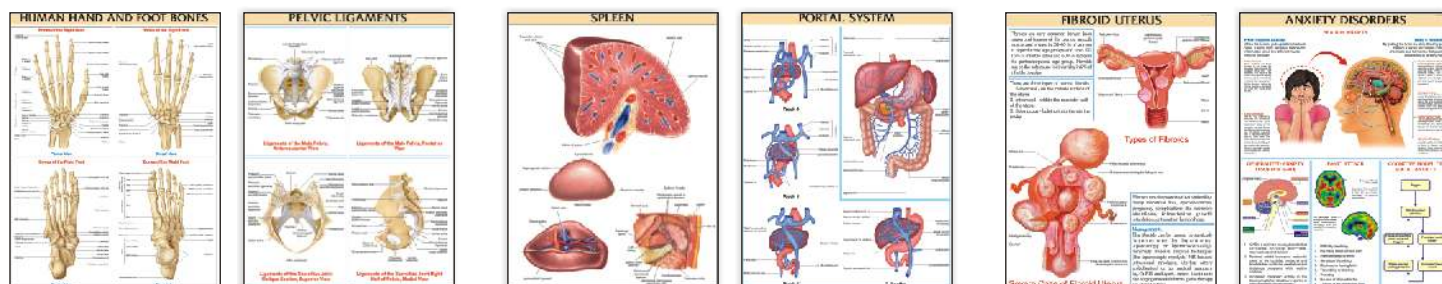
IMPORTANT NURSING CHARTS



HUMAN PHYSIOLOGY CHARTS



OTHER MEDICAL CHARTS



BONES & LIGAMENT CHARTS

ORGAN & SYSTEM CHARTS

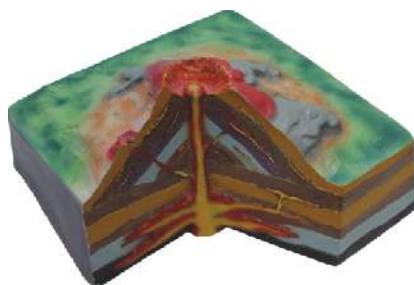
DISEASE & DISORDER CHARTS

For your requirements of items for Medical, please ask for our separate catalogue.

Teaching Learning Material for Social Studies



Globes



Models



Apparatus



Solar System



Rocks & Minerals



Wind Vane



Geographical Models



Slides



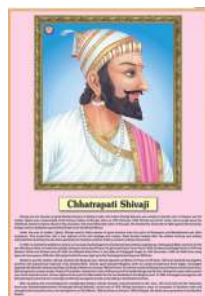
Models



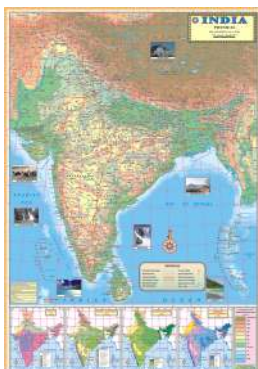
Binoculars



Rocket Model



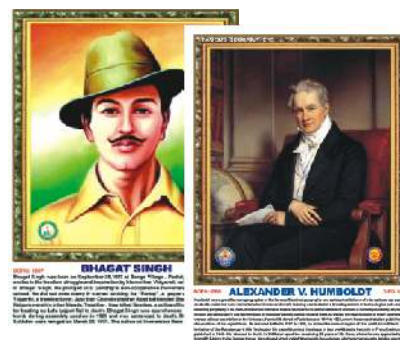
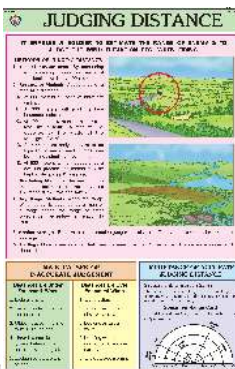
Life Sketch



Maps



Charts



Photos

For more details, please ask for our SOCIAL STUDIES CATALOGUE